



FUTURE CONSTRUCTION PROJECTS ARCHITECTURAL-ENGINEERING SERVICES REQUEST FOR QUALIFICATIONS 20-017

Shawnee Mission Unified School District 512
September 8, 2020



gouldevans

This page is intentionally left blank.

September 8, 2020

Tyler Clubb, Director of Facilities
8200 West 71st Street
Overland Park, Kansas 66204



RE: Request for Qualifications | Future Construction Projects Architectural-Engineering Services

Dear Tyler and members of the evaluation committee,

Being an innovative leader in the creation of flexible, transformative learning environments has never been easy.

Today's new world demands new ways of thinking, and your district must balance that with your specific curriculum, goals, budgets, and standards. As you prepare for future projects, you want to assure that the program you create aligns with the needs of both today and tomorrow.

This challenge transcends the realm of a traditional architectural skill set. You need a team of experts that will not only manage these complex projects with accelerated schedules, but also has nationally recognized professional insight, who simultaneously possesses fine-grained local connections in all corners of Johnson County. Your partner team should be philosophically adjacent to your mission—intellectual neighbors, so to speak—and should possess a range of skills that round out the talent you already have on staff.

The Gould Evans team brings to this effort a body of work that challenges the status quo and supports learning access, equity, and inclusion for every learner. To help shed more light on these opportunities, we partnered with UDL-IRN (the Universal Design for Learning-Implementation and Research Network) to create the first UDL space design standards for educational spaces. On top of that, we have an in-house researcher and educator who reinforces our commitment to elevating education practices by analyzing how learning spaces affect students. We are committed to developing schools that work for all learners, and we want to engage in these conversations with you.

We are a local team of architects, designers, educators, researchers, community advocates, and policy makers bringing over 45 years of experience in education design, district planning, project management, community engagement, and educational equity. We are ready to have our expertise meet yours and leverage our national experience to make your district a model for success. We look forward to the opportunity to discuss why the Gould Evans team would be a perfect partner for this mission.

Sincerely,

A handwritten signature in black ink, appearing to read "John M. Wilkins, Jr.", with a stylized flourish at the end.

John M. Wilkins, Jr., AIA, LEED AP
Principal
785.330.7060; john.wilkins@gouldevans.com

A handwritten signature in black ink, appearing to read "Adam Sterns", with a stylized flourish at the end.

Adam Sterns, AIA, LEED AP
Principal Project Manager
816.701.5355; adam.sterns@gouldevans.com

INTRODUCTION

LOOKING FOR AN AGILE CO-CREATOR FOR SHAWNEE MISSION UNIFIED SCHOOL DISTRICT 512'S NEXT CHAPTER?

SMSD'S CHALLENGES

RENOVATING
OCCUPIED SCHOOLS

STEWARDSHIP OF
DISTRICT DOLLARS

UPHOLDING
STAKEHOLDER
VISION

MANAGING
JURISDICTIONAL
REVIEWS

OPTIMIZING
LONG-RANGE
OPERATION COSTS

OUR PARTNERSHIP'S STRENGTHS



WE ARE LOCAL

LOCALLY CONNECTED
LOCALLY INVESTED
LOCALLY INSPIRED
NATIONALLY EXPERIENCED

We're embedded in your community.



WE ARE BUILDING EXPERTS

EXPERTS IN BUILDING SCIENCE
EXPERTS IN SUSTAINABILITY DESIGN
EXPERTS IN BUDGET MANAGEMENT
EXPERTS IN QA/QC PROTOCOLS
EXPERTS IN COMPLEX RENOVATIONS
EXPERTS IN JO CO AJH REVIEWS

*We have 45 years of
education experience.*



WE ARE EDUCATION RESEARCHERS

RESEARCH FOR EDUCATION SPACES
RESEARCH FOR LEARNER EQUITY
RESEARCH FOR LEARNER SUCCESS
OUR RESEARCH INITIATIVES:
*EdCo, STEAM Studio, Real-World
Learning, Space Design Research,
Universal Design for Learning*

*Our education practice aligns
with SMSD's specifications.*

WE ROUND OUT YOUR TEAM

WE VALUE A CULTURE
OF SOLUTIONS DRIVEN
BY IDEAS.

FIRM PROFILE 1

APPROACH 5

PROJECT EXPERIENCE 13

TEAM PERSONNEL 33

REFERENCES 47

SUB-CONSULTANTS 51

FEE STRUCTURE 59

ADDITIONAL ITEMS
TO ANSWERS 63

This page is intentionally left blank.



Burnett Elementary School – Milpitas, CA

This page is intentionally left blank.

FIRM PROFILE AND PHILOSOPHY

gould evans

Founded in 1974 in Lawrence, KS, Gould Evans is a design firm dedicated to using our creative powers to move the world forward. Our firm culture is built on using the design process to solve problems and improve our clients' competitive edge. We reward thought leadership that aims high—from high-performance buildings to high-performance schools.

A FAMILIAR, TRUSTED PARTNER

- Our team has intimate familiarity with the Shawnee Mission community, and we have extensive experience with district-level processes and standards. We are committed to the District achieving success on these future construction projects.
- We will listen to you through every part of the process: visioning, master planning, design, documentation, and construction administration services.
- Our well-managed, experienced team will create clarity in communication to help streamline the efforts of your district team members.

NATIONAL EXPERTISE WITH LOCAL UNDERSTANDING

- We are a team with national experience and a national perspective, located in your back yard.
- We have 5 studios nationally.
- Our firm has designed more than 200 K-12 projects for districts and private schools nationally.

LEADER IN DESIGNING FOR QUALITY LEARNING

- Our team is known for our excellent educational design experience coupled with a deep portfolio in renovation projects—we have an expertise in leveraging existing building stock to accomplish 21st century learning goals.
- Our firm is a primary contributor in the creation of a learning space design guide for UDL (Universal Design for Learning), an internationally recognized model for personalized learning.

- Our firm has an exclusive partnership with the UDL-IRN.
- Our team is comprised of leaders in STEM/STEAM education through our research in STEAM Studio.
- We are invited to serve on national design competition juries evaluating the best in new school designs.
- We speak at national conferences on varied topics related to innovation in education design.

Our studio is filled with passionate and curious designers devoted to making schools more effective and joyful for our next generation of learners.

DEVELOPING STRONG CAMPUSES

- Committed to educational research to figure out how schools can reflect and adapt to how we will educate twenty+ years from now.
- Envisioning how school campuses can better fit into the ecosystem of their surrounding communities.
- Know that even if we do not have all of the right answers at the start, we are confident that we are the firm asking the right questions.



KANSAS CITY STUDIO
 4200 PENNSYLVANIA AVE
 KANSAS CITY, MO 64111
 816.931.6655

This page is intentionally left blank.



Free State High School – Lawrence, KS

TAB 2: APPROACH

NATIONAL PERSPECTIVE



APPROACH TO DESIGN

PROGRAMMING

An essential part of the planning and design process is establishing the basis of design for building systems, performance goals for energy usage, and facility standards for finishes and equipment. Included in this effort is a careful evaluation of the existing systems that may remain in place. If these systems are deemed valuable and kept in operation, they may influence the overall approach to the mechanical, electrical, and plumbing systems.

In addition to confirming the applicable building and life safety codes, our design team will work with you during the programming phase to establish your expectations for building systems and materials. Anticipated occupancy, hours of operation, acceptable temperature ranges, lighting levels, equipment plug loads, and ventilation requirements will all impact initial design decisions and long-term operational efficiency of the buildings. We need to discuss and confirm these at the outset to provide our engineers with clear direction for the sizing and specification of systems and equipment.

Engaging our clients deeply in the design phase leads to the best solutions. This level of engagement requires a collaborative approach where clients can truly participate in the process, not just review a suggested solution. To engage our clients, Gould Evans utilizes an alternative-based approach to conceptual design. Discussing the benefits and shortfalls of a variety of solutions allows

our clients to steer the design effort towards results that meet programmatic needs. This level of engagement also establishes a deeper level of communication between the client and the design team, resulting in a better informed process and product.

CREATIVE BALANCE

As a design practice, we're intellectually curious and intentionally diverse in the type of projects we pursue because we're excited at the possibility of solving new problems. We seek client-partners who are curious as well, ones that are thoughtful and looking to make an impact on people's lives. Fundamentally, our goal is to deeply understand what makes our clients tick—your people, your place, your culture and your context—this exploration allows for great, unexpected results.

We rely on creative balance because we thrive when operating within both the social and physical realms of the built environment. Socially, we think hard about the ways in which people occupy space—how they learn, how they move, how they feel—because our mission is to activate the senses through built form. We're also passionate about the technical details: creating economical, functional, lasting, smart spaces. Ultimately it's the space in between these two realms that truly inspires us; we strategically pluck aspects of both realms when addressing an issue, assimilating them into something unique—something that's beautiful, inspiring, and intelligent, while being cost effective and sustainable at the same time.

THE PHASES

SCHEMATIC DESIGN

This very collaborative phase includes options that we will test spatially following our Deep Dive phase. The architecture will begin to emerge as we begin to consider adjacencies and transform concepts into space. In this phase, we will develop a schedule that allows for proper design feedback and development of the design. We will deliver a set of drawings (meeting the programmatic needs), narratives, and a cost estimate at this phase. We will begin Revit models in this phase and potentially start to engage engineers and consultants.

DESIGN DEVELOPMENT

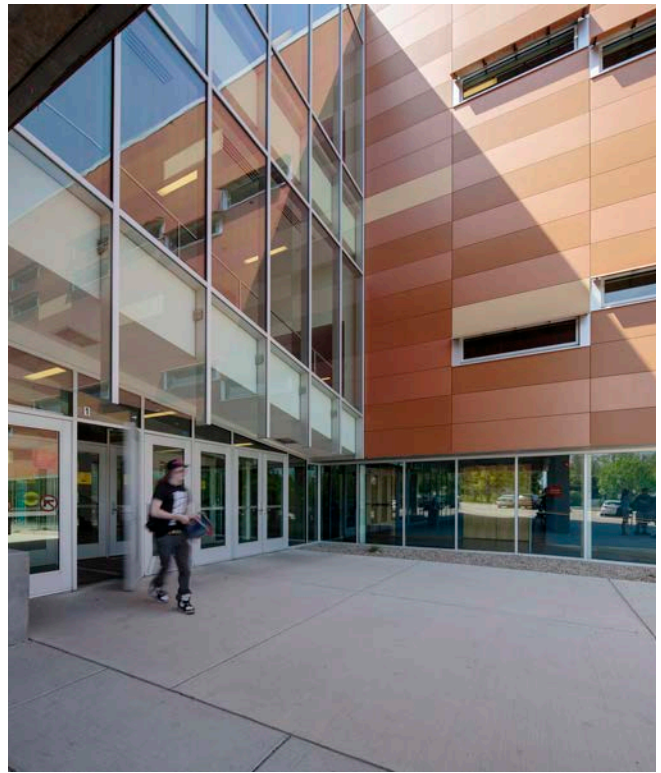
This phase builds on Schematic Design and begins the early phases of detailed design with two submittals with meetings at 50% and 100%. This phase will require more interaction with technical staff at the school as we outline technology needs and develop strategies for systems. We will want to structure interactions with a building committee to report progress in design decisions, development of finishes, and begin collaboration on furniture.

CONSTRUCTION DOCUMENTS

This phase is primarily about documentation and getting to the permit. We will work with SMSD to ensure timing of this phase is timely as we work towards a permit. Our current process assumes an over-the-counter permit; however, this may change depending on the ultimate design direction for the space and extent of renovation required.

BIDDING AND CONSTRUCTION ADMINISTRATION

At this stage of the project, we shift our team to supporting the contracting team that will be involved in the implementation and construction of the project. We will work with SMSD to provide helpful insight during bidding and provide standard Construction Administration services to ensure that the collective vision for this project is realized.



KEEPING UP ON OUR PROMISES

CONTROLLING QUALITY

Throughout the course of a project our design team is constantly evaluating how we're meeting programmatic, quantitative, and qualitative requirements. For us, controlling quality is more than a tag line; by controlling the quality of the process we ensure that the end result, is a complete success.

We use a BIM model (Revit) to facilitate basic quality control and this technology is supplemented with thorough and deliberate communication among the design team and the client group. We schedule extensive review sessions (weekly or bi-weekly as necessary) with the client group and our consultant team to manage documents and process accordingly. Our architectural team will remain consistent throughout the course of the project; with the principals, project manager, and project architect involved in all phases until completion and close out.

POST-OCCUPANCY EVALUATION

Gould Evans has developed a rigorous Post-Occupancy Evaluation (POE) process as a part of our dedication to evidence-based design and passion for continuous design improvement. We rely on a variety of tools to capture both quantitative and qualitative feedback on the success of learning spaces, including online surveys, poster surveys, ethnography, photo surveys, and roundtable discussions. It's important to never rely on rules of thumb because the landscape of education is changing too rapidly to expect old formulas of education design to have any relevance today.

Not only does our POE process give us much improved insights into the nuances of how people interact with their learning environments, but the process can also support what we call "occupancy commissioning." We often find that the users can greatly benefit from a half day of training to understand the full range of capabilities of multi-use flexible space. Too often, flexible spaces go unchanged because the users don't fully understand the capability of the space and furniture, or they don't feel empowered to change the setting.



EDUCATION DESIGN

For us, the creation of high-performing educational environments goes beyond design and construction. It involves total immersion; being an advocate for the advancement of 21st century learning, volunteering our time and resources, and partnering with clients and experts from varying disciplines to develop a holistic education practice. Each project is approached from the inside out with the goal of improving learning outcomes, providing healthy spaces for teachers and students, and supporting the mission of each client, district, or school.

Our K-12 education experience—including the planning, programming, and design of more than 200 projects for districts and private schools nationwide—demonstrates our leadership in guiding complex institutional clients through highly inclusive, collaborative processes to identify project goals, prioritize needs, and develop efficient, flexible, and forward-thinking spaces that support 21st century learning. The diverse range of these facilities includes classrooms, media centers and libraries, auditoria, athletic facilities, dining, and outdoor learning environments, among others. In addition to the need for a highly qualified and effective teacher for every classroom, the physical environment of a school plays a critical role in student success.

Designs are based on science and research that generates outcomes that are specific to the people and places they serve. In partnership with international organizations such as Association for Learning Environments (A4LE) and Universal Design Learning (UDL), we excel at designing spaces that support highly developed personalized learning models.

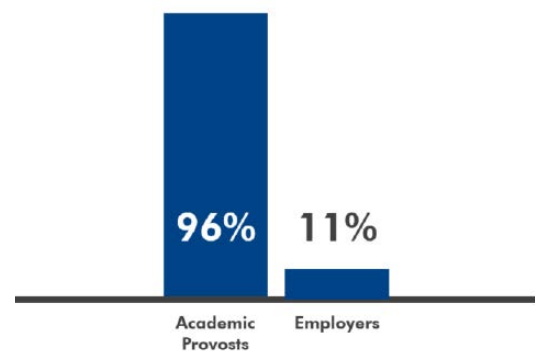
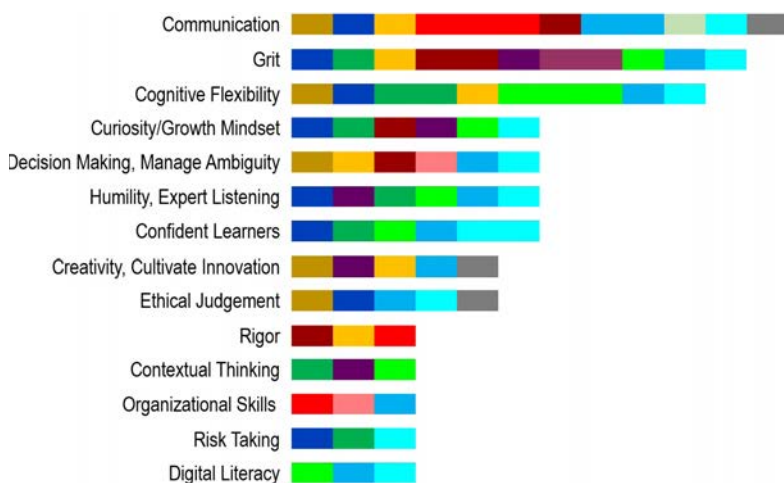
EDUCATION INITIATIVES



EDCO

Gould Evans has been investing in research and design exploration of real-world learning strategies for the last five years. Our initiative, EDCO, is where EDucation and COrporate worlds collide. We work closely with the region's leading organizations creating relevant initiatives in this field such as: The Kauffman Foundation's Real World Learning (RWL) Initiative and Market Value Assets (MVA's), KC Social Innovation Center, HireKC.org, and The Missouri Innovation Campus. As a result, we've advanced new ideas for ways institutions can build campuses and learning spaces to help develop student competencies critical for their worlds following graduation, and that engage them with business partners through client-based projects, entrepreneurship projects, and programs supporting industry recognized credentials (IRCs). Much of our work can be reviewed on our EDCO site (GouldEvansEducation.com/EDCO).

TRANSVERSAL SKILLS: WHAT EMPLOYERS ARE PRIORITIZING IN THE HIRING PROCESS



"Do you believe colleges are effectively preparing students for the workplace?"

Source: Inside Higher Ed survey, 2014



STEAM STUDIO

Gould Evans is working in partnership with the School of Education at Rockhurst University to operate an experimental STEAM (STEM disciplines + Art) Learning Studio within our Kansas City office. Students come to Gould Evans 3-5 days a week, participating in innovative learning programs integrating design thinking. Partners include many area private and charter schools, public schools, and non-profit agencies supporting underprivileged and homeless youth.

David Reid, our design principal/senior education designer, is a co-founder of STEAM Studio and uses his experience to mold and influence many of his projects. Gould Evans design staff, including many of our team members, also frequently participate in STEAM Studio, demonstrating everything from architectural design to digital 3D modeling, fashion design, graphic design, 3D printing, and more.

The insights gained from this hands-on experience have led to unique opportunities to partner with other signature schools to execute STEAM-based learning overlays of their campuses. Two of those projects, St. Teresa's Academy and Rockhurst High School, are both pursuing advanced STEAM programs worthy of national recognition. Aside from the STEAM focus, both campuses are extending the nature of STEAM to courses well beyond science, technology, engineering, art, and math—it's creating a collaborative, cross-disciplinary ecosystem that permeates the entire school culture and transforms the instructional models therein.



STEAM STUDIO



GOULD EVANS + UDL-IRN PARTNERSHIP

Three years ago, Gould Evans was invited by a national organization, Universal Design for Learning-Implementation and Research Network (UDL-IRN), to create the first space design standards to support UDL, an internationally recognized learning framework that supports all learners. This framework, originating out of Harvard University's School of Education, is designed to support learning access, equity, and inclusion for every learner. The UDL space design guidelines lend a more strategic approach to education architecture.

gould evans

+



DECK OF SPACES

Building off of the UDL framework, Gould Evans and UDL-IRN created the Deck of Spaces. The deck has been designed through an interdisciplinary collaboration of architects, educational researchers, educators, and learners. Combined, our work demonstrates the importance of purposefully highlighting the relationship between modern pedagogical practice and the design of learning environments. Pedagogy and learning space are inextricably intertwined. The Deck of Spaces™ is designed to help facilitate thinking among all campus stakeholders about creative ways space can support and amplify your goals for learning and augment the implementation of UDL practices.

EDUCATION RESEARCH

IN-HOUSE RESEARCHER AND FUTURIST

Gould Evans has hired a full-time education researcher on staff. Michael Ralph has a PhD in Educational Psychology from the University of Kansas, and his career has focused on the intersection between technology, science, and learning. At Gould Evans, Michael is in charge of primary education research, identifying and recruiting think tank members, education advising on design teams, podcast support, and working on publications. He will continue to research education practices and how learning spaces affect students.

KU AND NORVANIVEL RESEARCH PARTNERSHIP

NorvaNivel is an innovative furniture company based in Australia with newly opened operations in the U.S. Gould Evans was asked to be an exclusive partner with them to conduct a longitudinal research project evaluating specifically tailored classroom designs in five separate schools. Gould Evans enlisted the partnership of nation-ally renowned education researchers at KU's School of Education and hired a full-time researcher on staff at Gould Evans. This longitudinal, primary research project is on-going, and is yielding valuable results to inform how our clients equip their learning spaces.

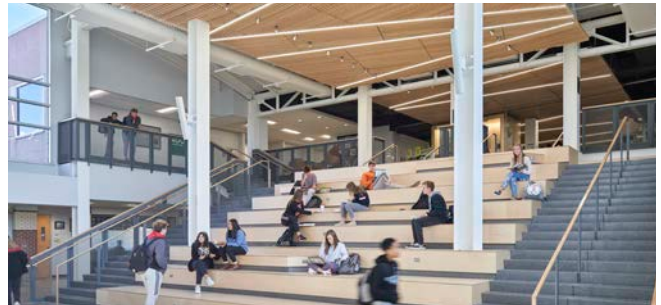
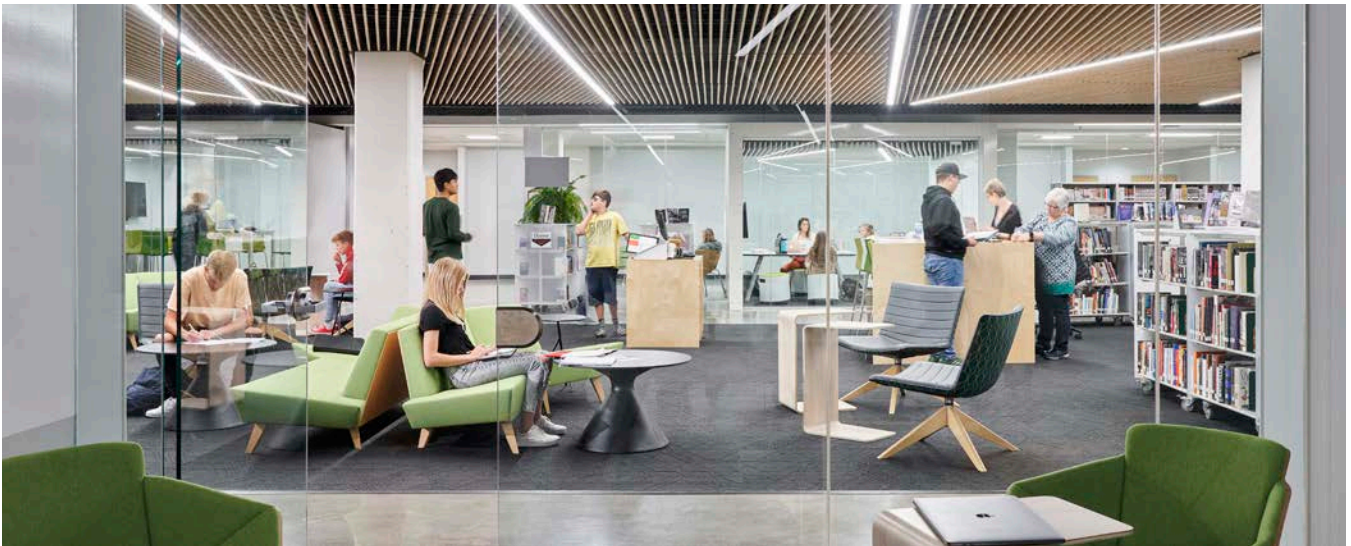




TAB 3: PROJECT EXPERIENCE

St. Paul's Episcopal Day School – Kansas City, MO

This page is intentionally left blank.



LAWRENCE FREE STATE HIGH SCHOOL

RENOVATION AND ADDITION

The \$15.2M upgrades for Free State High School were part of a \$87M bond issue that was passed to fund improvements to the district's two high schools and four middle schools. The Free State improvements include moving the school's library/media center to a central corridor on the second floor, while connecting it to a first-floor dining commons with a "media stair." The monumental stair includes seven levels of ascending platforms between two traditional staircases—creating a venue for social gathering, classes, and special presentations for groups of up to 100 students.

The decision to relocate the library/media center was made when a survey found that many of Free State's students did not use the library. Thus, the new design has multiple features that make the library more appealing for students and provides greater flexibility, with the goal of creating a fully integrated learning environment used eight hours a day.

By relocating the library/media center, the existing library could be converted into special education classrooms, providing direct sunlight and enough space for the laundry, shower, and kitchen facilities required for some special needs students. The new location of the special education classrooms also allows greater integration with the rest of the school's population for special needs students.

LOCATION: Lawrence, Kansas

SIZE: 13,000 SF addition/47,000 SF renovation

LAWRENCE HIGH SCHOOL

RENOVATION AND ADDITION





Gould Evans is currently engaged with the Lawrence School District on a substantial renovation and expansion project for Lawrence High School. Currently under construction, the design team utilized teacher and student surveys to understand what facilities were needed and how improved spaces can better serve evolving teaching methodologies.

Based on feedback from key stakeholder groups, the modernized high school will include more shared collaboration spaces outside the classroom that integrate digital media, gallery spaces, and flex spaces for groups of varying sizes. These collaboration spaces will support the exploration of innovative programs that focus on interdisciplinary work in a way that is difficult to accomplish in the current classroom layout.

In addition to improved collaboration and interdisciplinary interaction, the high school renovation will also emphasize wellness, nutrition, and physical health with a proposed wellness commons. The wellness commons will connect different health programs—from dance space to weight room—while also bringing visual awareness to the importance of health and wellbeing.



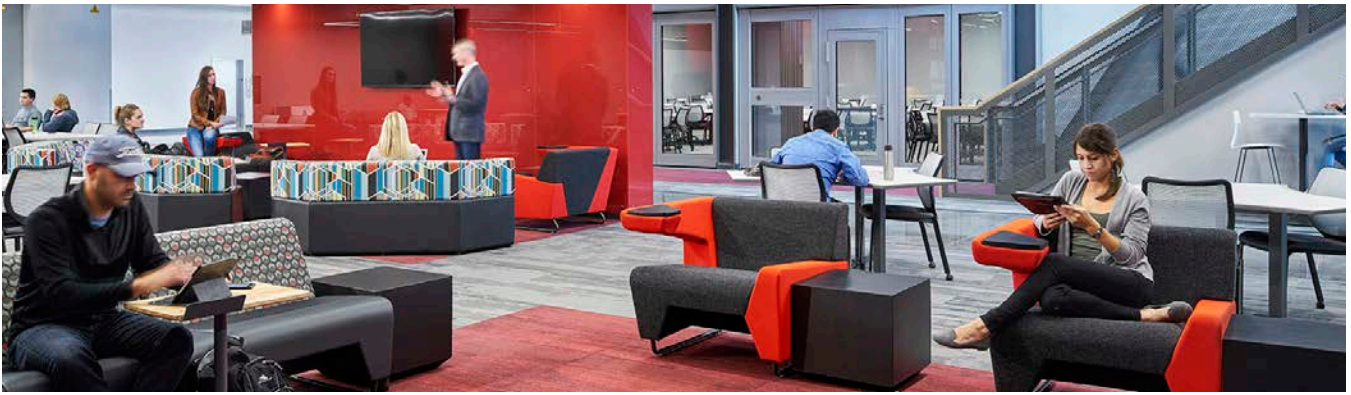
LOCATION: Lawrence, Kansas

SIZE: 27,000 SF addition/288,000 SF renovation

MISSOURI INNOVATION CAMPUS

UNIVERSITY OF CENTRAL MISSOURI AND LEE'S SUMMIT SCHOOL DISTRICT R-7





The Missouri Innovation Campus (MIC) is a one-of-a-kind program offering the most accelerated degree program in the country. It's the result of a unique partnership between a K-12 school district and a university: Lee's Summit School District R-7 (LSR7) and the University of Central Missouri (UCM). It also involves more than two dozen industry partners throughout the Silicon Prairie region. It's specifically designed to meet the emerging needs of millennial students seeking to enter the workforce quicker—at less cost—with better assurance of job placement as opposed to traditional secondary-to-undergraduate tracks. Maintaining close alignment with workforce needs means programs are constantly evolving; thereby the facility has an unusually high degree of flexibility.

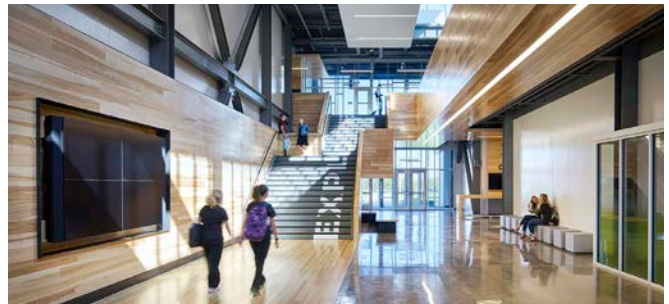
UNIQUE STUDENT COMMUNITY MODEL:

The building serves as a “base camp” for students whose study locations include this campus, the workplace, and their home high schools. Cohorts become tightly knit groups of like-minded students and this model changes the dynamics of student life. Consequently, the building is organized in quadrants each serving an academic department. Circulation space is transformed into “owned community space” (Departmental Commons)—usable for academic breakout as well as a third place. Cohorts collaborate on projects, socialize, and ideate in this communal space—it's where they call home. The “front porch” to each commons serves as a landing for tours where student ambassadors welcome visitors and take them through the experience of the department.

Classrooms and labs open directly onto the shared communal space via sliding glass walls or simply retractable gates. Movement from one space to another is porous—much like a workplace where a palette of spaces offers variety and specificity for the activity at hand. Self-directed students are free to move from one space to another—it's not the one-size-fits-all flex classroom.

LEARNING PALETTE:

There is a broad palette of active learning studios that support the departments. This variety allows the building to support progressive teaching models—a pedagogical incubator. Flex studios shift easily from one learning mode to another. Flexible presentation technologies shift with the pedagogical needs. This flexibility serves the multiple users well; while shared between LSR7 and UCM during the day, by evening, UCM takes over more classrooms with further expanded course offerings.



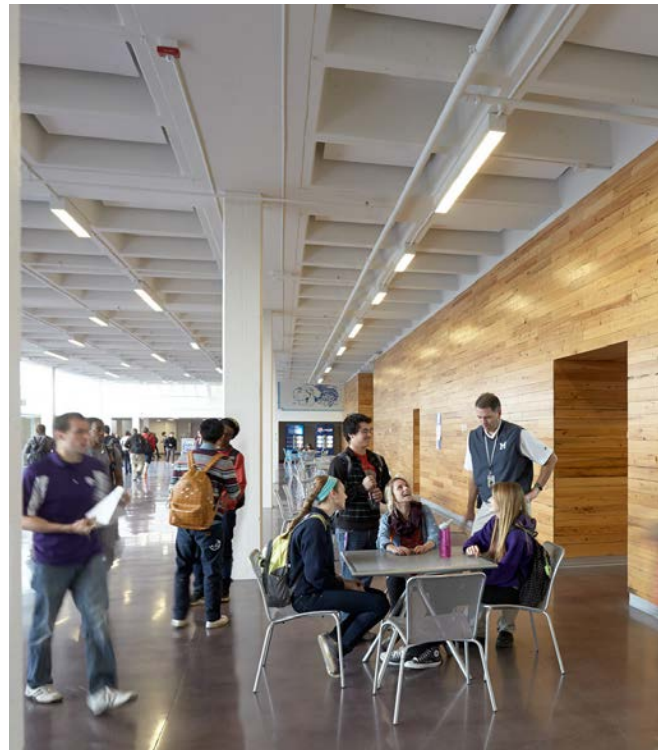
LOCATION: Lee's Summit, Missouri

SIZE: 140,000 SF



MANHATTAN HIGH SCHOOL

West Campus Addition & Renovation



LOCATION: Manhattan, Kansas

SIZE: 80,000 SF (addition) / 245,000 SF (renovation)

Human inquiry was the primary driver in the reorganization of this high school campus, which had undergone multiple additions to accommodate a growing student population. The design team's research pointed to two primary issues plaguing this growth: a lack of organization, and consequently, a lack of community.

We addressed the issues of organizational clarity and transparency of program by consolidating commons, cafeteria, library, and media center into a highly visible academic core, nestled between two light-filled and rejuvenated courtyards. The core serves as a social and connective "living room," with blurred boundaries between interior/exterior and social/academic programs. Within this core, spaces accessible to the community are distinguished from student spaces with rich material texture. To further support clear wayfinding and circulation, a new building "language" was overlaid upon the campus at a multitude of scales. In some cases this language is literal, as in the braille signage; in some cases material, as in the graphic patterns embedded in the long runs of lockers or exterior building panels that transition tonally across the facade; and in some cases conceptual, as in the dappled light that filters through the exterior scrim.



ROCKHURST HIGH SCHOOL

MAKER SPACE (XAVIER COMMONS) AND LEARNING COMMONS

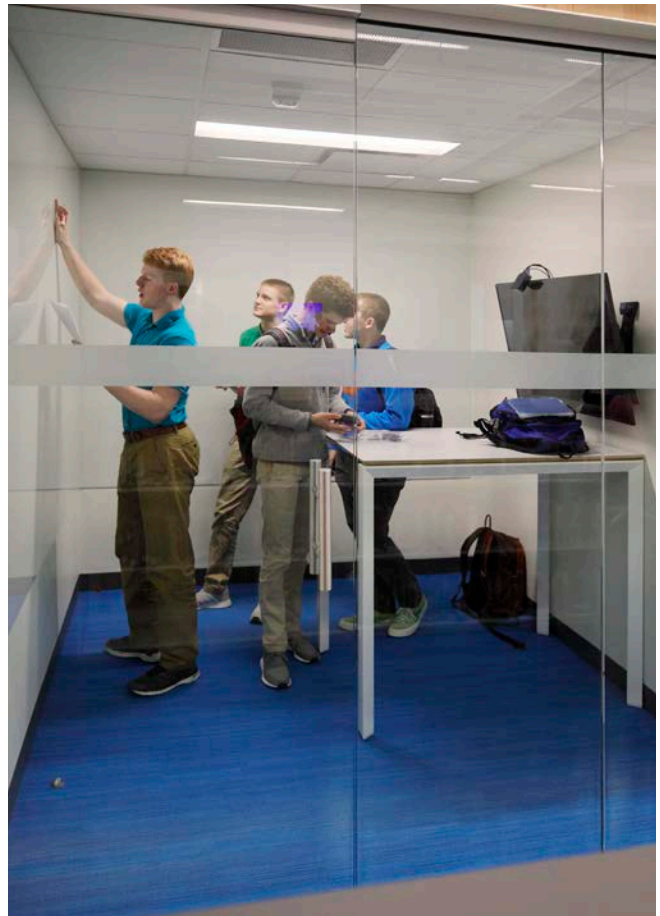




Beginning in the fall of 2015, Rockhurst High School adopted a fully digital learning platform in which iPads and laptops replace textbooks. This change, along with a more flexible, STEM-based curriculum, required similarly flexible learning spaces. Following after the completion of the master plan and athletics enhancements, new learning spaces were developed to address this need by providing a variety of learning environments.

The new facilities included a centrally located learning commons and a new classroom wing that provided a variety of breakout spaces, technology-integrated classrooms, and a maker space lab to facilitate an experiential learning curriculum.

The enhanced learning facilities are meant to act as a catalyst for improved collaboration between students by providing venues for the exchange of information, community engagement, and pitch space for the exhibition of student work.



LOCATION: Kansas City, MO

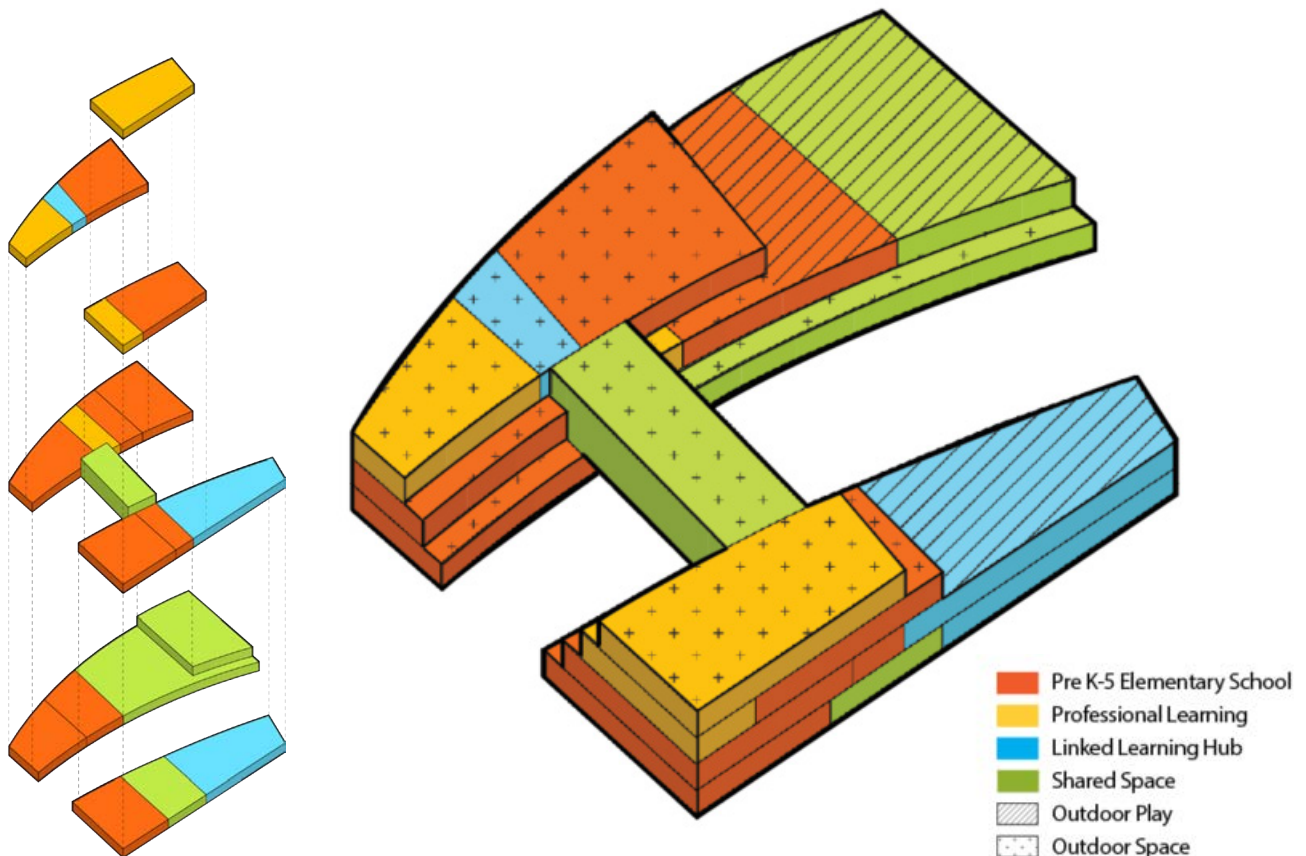
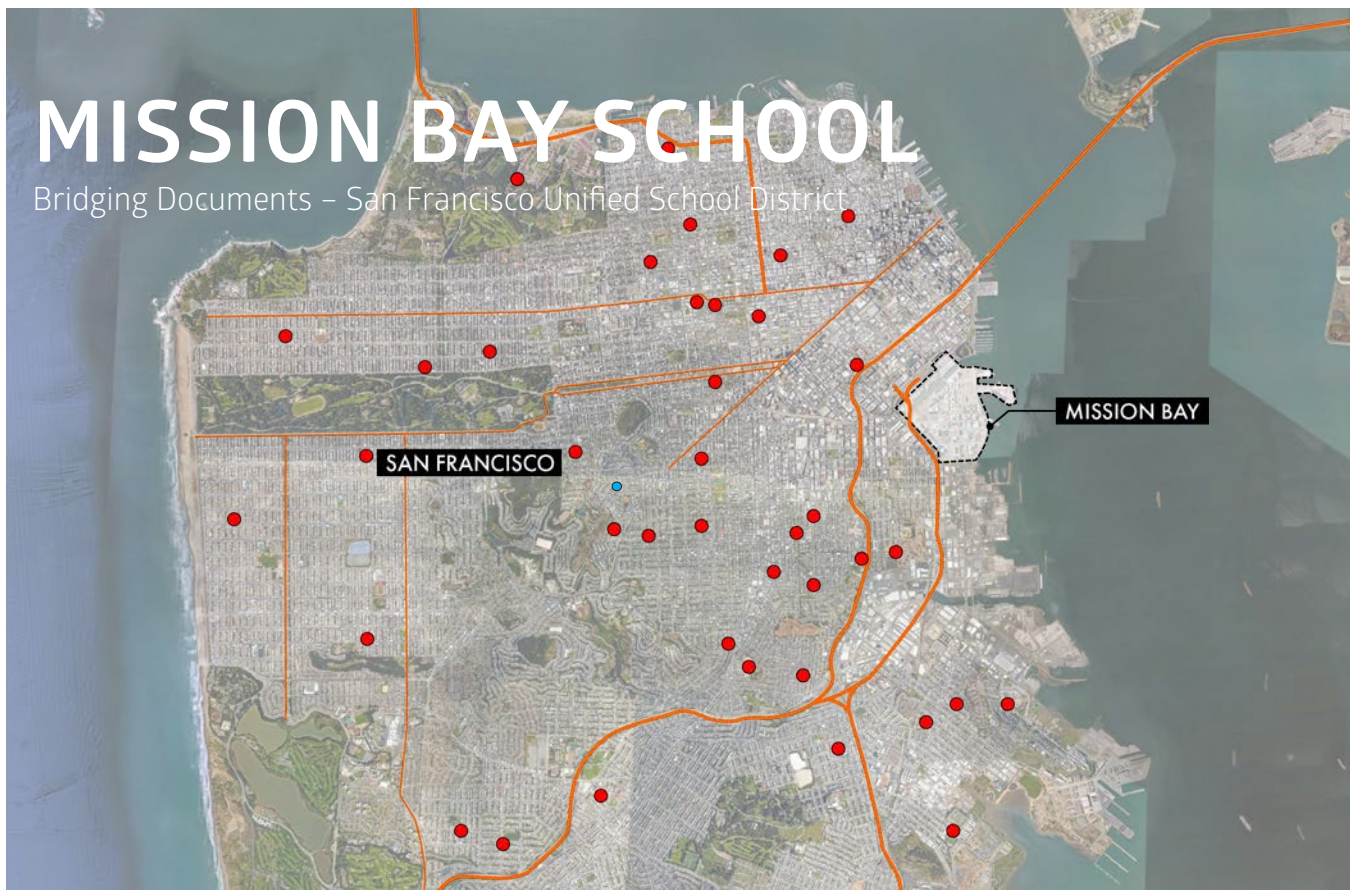
SIZE: 16,000 SF Learning Commons/16,000 SF class renovation

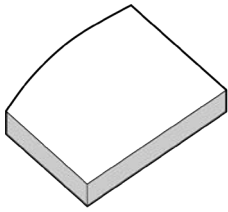
“The building is becoming more and more a home to the students. They’re becoming more comfortable going where they need to go to do their work. They are so comfortable in this space!

Father Terrence Baum
Former President, Rockhurst High School

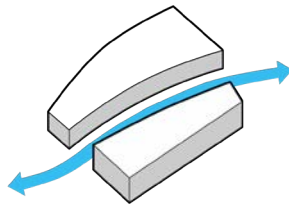
MISSION BAY SCHOOL

Bridging Documents – San Francisco Unified School District

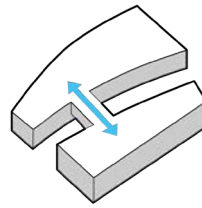




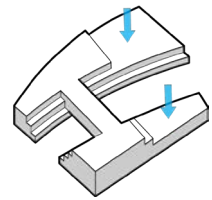
Maximize Site Coverage



Create Community Path through School Site



Connect School Program Above, to be Separate yet Visually Connected



Create Roof Terraces for Safe Outdoor Learning and Play, Introducing Green Galleries along the Community Pathway

In July 2019, San Francisco Unified School District (SFUSD) engaged Gould Evans to develop a site analysis and programming for the Mission Bay School project. SFUSD directed the design team to investigate Block 14 of the University of California, San Francisco (UCSF) Mission Bay campus, in order to determine the viability of the proposed project school site and to better understand the environmental and design opportunities, as well as constraints.

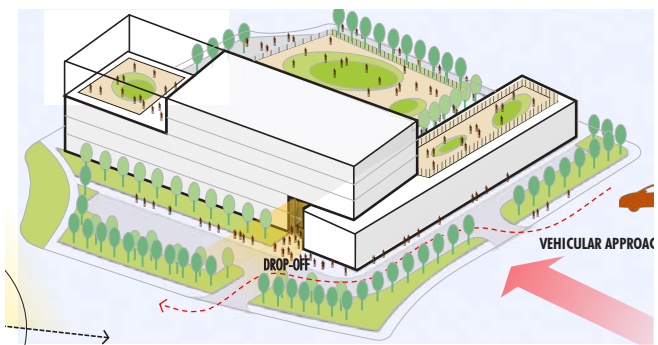
This new facility may consist of three primary programmatic components:

- A preschool, transitional kindergarten, kindergarten through 5th grade elementary school
- A linked learning hub in which high school students from around the district may participate in job training, internships, and business partnerships
- A professional learning facility in which educators will participate in training

The new facility may be approximately 95,000 SF on a 2.5-acre parcel transferred from UCSF to SFUSD. Mission Bay School will be located in the Mission Bay neighborhood, which is a relatively new area of development within San Francisco to include housing, the hospital campus, biotech businesses, public park areas, and Chase Arena. SFUSD's demographic projections show enrollment of young students to grow significantly both in this region as well as other South-of-Market areas.

As part of the site analysis, Gould Evans hosted a think tank to explore the environmental and sustainability aspects of Block 14. Through consideration of the project and program, within the context of site and region ecosystem attributes, design opportunities were developed to provide Mission Bay School with future resilience and connection to the micro and macro ecological systems. The design team was joined by SFUSD bond program managers, curriculum development stakeholders, and the consultant/engineering team. Initial concept studies were developed for the massing, positioning, and performance of the Mission Bay School in response to the environmental analysis and experience.

The project is now in the Schematic Design Phase and will complete bridging level Design Development in Fall 2020.



LOCATION: San Francisco, California

SIZE: 95,000 SF

NEW ELEMENTARY SCHOOLS

Gould Evans has extensive experience building new elementary schools. The schools we build reflect the changing sphere of education and help prepare districts for the future of 21st-century learning. Our education design and research teams implemented elements such as learning pockets, breakout spaces, SPED classrooms with flex spaces, upgraded technology, multipurpose/cafeteria hybrid spaces, and libraries as a heart of the school.

REPRESENTATIVE EXPERIENCE

Blue Valley USD 229 – Overland Park, KS
Elementary School #24

Shawnee Mission USD 512 – Overland Park, KS
Comanche Elementary School

San Francisco USD – San Francisco, CA
Harvey Milk Elementary School; Mission Bay Elementary School;

West Contra Costa USD – Richmond, CA
Wilson Elementary School New Campus

Albany USD – Albany, CA
Ocean View Elementary School New Campus



EARLY CHILDHOOD CENTERS



Gould Evans' work on early childhood centers has helped create spaces where children can play, learn, and receive the care they need. Our designs make it clear where children can engage in self-initiated or staff-initiated environments. The building characteristics developed for our centers include light-filled spaces integrated with the natural environment, diversity of space types within each classroom—geared specifically towards developmental activities—central community spaces that connect all classrooms and staff throughout the facilities, and mechanical and structural systems integrated as learning tools.

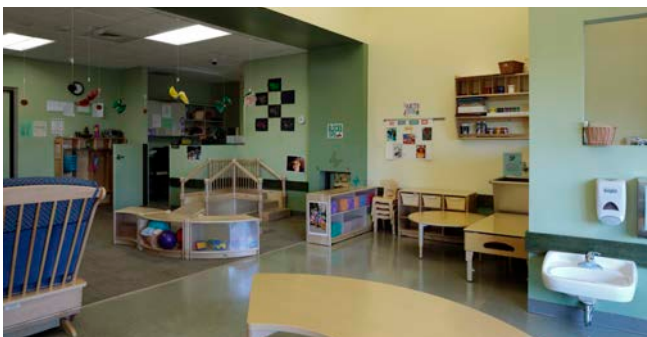
REPRESENTATIVE EXPERIENCE

Kansas State University – Manhattan, KS
Center for Childhood Development

Chabot-Las Positas Community College – Livermore, CA
Las Positas Early Child Development Center

MCC Penn Valley Campus – Kansas City, MO
Francis Child Development Institute

Cerner Headquarters Campus – Kansas City, MO
Cerner Innovation Kids



CAMPUS REMODELS



As education models and needs shift, so must our learning environments. Our recent work with campus remodels reflects new and anticipated 21st-century learning models supported by our firm's research while also giving homage to each school's legacy and identity. Our education team has rejuvenated schools by converting space into technology-based, highly flexible learning centers with movable furniture that put learning on display.

REPRESENTATIVE EXPERIENCE

Lawrence Unified School District – Lawrence, KS

Lawrence High School; Lawrence Free State High School; Hillcrest Elementary School; Cordley Elementary School; New York Elementary School; Langston Hughes Elementary School; Sunset Hill Elementary School;

Shawnee Mission Unified School District 512 – Overland Park, KS

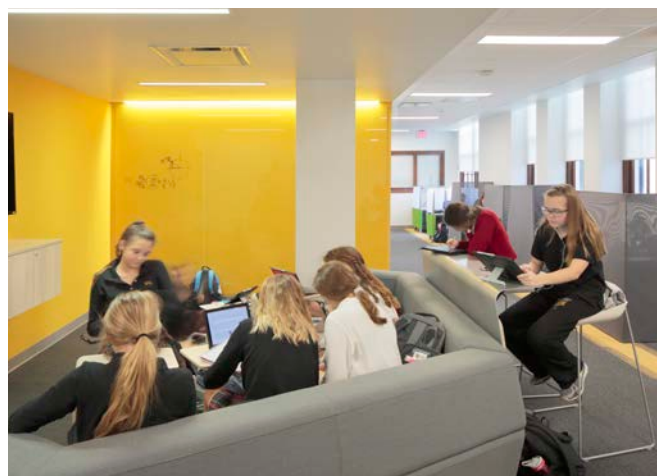
Shawnee Mission West High School Additions and Renovation; Shawnee Mission Northwest High School Expansion and Renovation; Belinder Elementary School Renovation (includes Library Addition); Indian Hills Middle School; Prairie Elementary School (includes Library and Media Center)

Blue Valley Unified School District – Overland Park, KS

Blue Valley Academy High School Modernization

Milpitas Unified School District – Milpitas, CA

Rose, Burnett, and Randall Elementary Schools; Russell Middle School; Central Administration Center Renovation



CAREER AND TECHNICAL EDUCATION FACILITIES

Our career and tech program projects are an evolution of traditional education models that recognizes the role of design in preparing students for the workplace environment. The rising cost of higher education dictates the need for an alternate, accelerated delivery model that enables students to learn from active professionals and gain practical experience.

REPRESENTATIVE EXPERIENCE

Missouri Innovation Campus – Lee's Summit, MO

Collaborative Campus between Lee's Summit School District and the University of Central Missouri

Ozark School District – Ozark, MO

Ozark Innovation Center

Lawrence Unified School District – Lawrence, KS

Lawrence High School Renovation and Addition

Manhattan-Ogden Unified School District –

Manhattan, KS

Manhattan High School

Maricopa County Community College District –

Phoenix, AZ

Gateway Community College (formerly Maricopa Skill Center)

San Francisco Unified School District – San Francisco, CA

Mission Bay Linked Learning Hub



FURNITURE DESIGN AND SPECIFICATION



Today's successful learning environments are often akin to a black box studio: highly adaptable, where everything is portable. Translated into classrooms, the imperative for a rich tool kit of flexible furniture is highly essential. For a furniture specifier/designer to understand how to optimize selections, they must be intimately in tune with education. That's why we offer this service within our education studio. If you think about it, the best classroom design can be rendered ineffective with outdated tablet arm chairs or oversized furniture that impedes mobility. Students are in physical contact with the classroom furniture the majority of the day; make it count. It must meet ALL the needs of an active classroom: mobility, stack-ability, transition from individual-to-team work, lightweight/easy to move, support lefties or righties, support a range of postures, support a range of activities from projects to digital work to artwork to discussion activities, and more recently easily configured for social distancing.

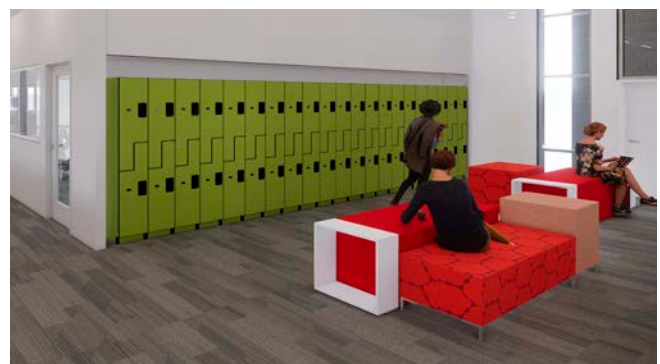
REPRESENTATIVE EXPERIENCE

Lawrence Unified School District – Lawrence, KS
Lawrence Free State High School

St. Paul's Episcopal School – Kansas City, MO
K-8 Renovation and Addition

Missouri Innovation Campus – Lee's Summit, MO
Collaborative Campus between Lee's Summit School District and the University of Central Missouri

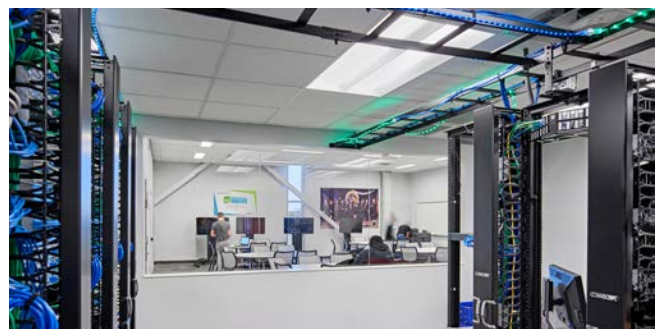
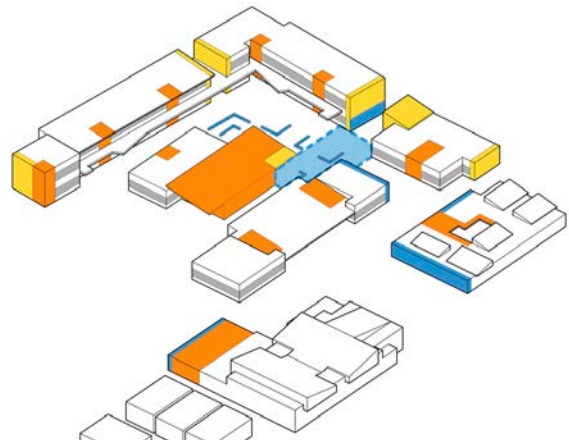
Cure of Ars – Leawood, KS
PK-8 Renovation and Addition



FURTHER EDUCATION SCOPES OF WORK



Our scope of education work does not stop at just new classrooms. The Gould Evans education team has touched on a large array of other components on almost every education project we have completed. Some of these include outdoor learning spaces, lighting support, bathroom updates, asphalt, playgrounds, roofing, security tech, technology upgrades, and more.



This page is intentionally left blank.



TAB 4: TEAM PERSONNEL

Pinckney Elementary School – Lawrence, KS

This page is intentionally left blank.



JOHN M. WILKINS, JR., AIA, LEED AP
Managing Principal

EDUCATION

Bachelor of Architecture,
University of Kansas

REGISTRATION

Licensed Architect

INVOLVEMENT

American Institute of Architects
Lawrence Education Achievement Partner
Various USD 497 School Planning
Committees Over the Past 15 Years

PUBLICATIONS

High Performance Buildings Get Real,
Building Operating and Management,
March 2012

Building Envelope Commissioning,
Building Operating and Management,
June 2012

Built to Succeed, Transformative Project;
Manhattan High School Case Study
for Excellence in Secondary Education,
American Schools and University,
January 2011

CONTACT

785.330.7055
john.wilkins@gouldevans.com

Tenacity, directness, and creativity are the hallmarks of John's management approach. He engrosses himself in a client's design challenge and works tirelessly to protect the vision, program, budget, and schedule to ensure a successful outcome. A strong management presence, he demands a high level of performance from the team while gaining everyone's trust and respect in the process.

John is happiest when working on complex projects that require inventive design solutions. A skilled manager of both people and process, he serves as Managing Principal of the Lawrence studio and has directed many of the firm's large educational, athletics, and civic projects. Clients compliment him on his ability to manage the design effort in a way that exceeds their expectations.

Lawrence Unified School District – Lawrence, KS

Lawrence Free State High School Renovation and Addition; Lawrence High School Renovation and Addition; Lawrence High School Master Plan; Pre-Bond District-Wide Planning; District Standards; Hillcrest Elementary School Renovation and Addition; Cordley Elementary School Renovation and Addition; New York Elementary School Renovation and Addition; Langston Hughes Elementary School Renovation and Addition; Sunset Hill Elementary School Renovation and Addition; Woodlawn Elementary School Renovation and Addition; Pinckney Elementary School Renovation and Addition; South Middle School and Broken Arrow Elementary School Addition;

Manhattan-Ogden Unified School District – Manhattan, KS

Manhattan High School West Campus Renovation and Addition

Baldwin Unified School District – Baldwin City, KS

Multiple School Renovations and Additions

Ottawa Unified School District – Ottawa, KS

District Master Planning

Perry-Lecompton Unified School District – Perry-Lecompton, KS

Williamsburg Elementary School Addition; Grantville Elementary School Addition; Lecompton Elementary School Addition and Renovation; Perry Elementary School Addition and Renovation

Troy Unified School District – Troy, KS

District-Wide Renovations and Addition



ADAM STERNS, AIA, LEED AP
Principal Project Manager

EDUCATION

Bachelor of Architecture,
University of Kansas

Bachelor of Science, Architectural Studies,
University of Nebraska

REGISTRATION

Licensed Architect

LEED Accredited Professional

INVOLVEMENT

American Institute of Architects

CONTACT

816.701.5355

adam.sterns@gouldevans.com

Adam's project management expertise, integrity, and calm demeanor take his client relationships to the highest level of commitment and trust. His repeat client rate and client testimonials speak for themselves. Clients know he is their advocate, and have even been known to refer to him as their own "personal hero."

Adam is known for the steadiness and confidence he brings to the design process—an inherently chaotic endeavor. He is skilled at educating clients about design, enabling them to make informed decisions. He can guide the most complex project to a successful outcome and build consensus within the most diverse project team. He does this through his sincerity, humility, and candor. A strong mentor, he empowers his teams to perform at the highest possible level.

Shawnee Mission Unified School District – Johnson County, KS

Indian Hills Middle School Renovation and Addition; Westridge Middle School Renovation and Addition; Horizons High School Security Renovation; Northwest High School Renovation and Addition; Northwest High School Kitchen and Cafeteria Improvements; West High School Renovation and Addition; Belinder Elementary School Renovation; Prairie Elementary School; Comanche Elementary School; Comanche Elementary School Modular Classrooms; Highlands Elementary School Security Renovation; Tomahawk, Diemer, Corinth, and Brookwood Elementary Schools Security and Kitchen Renovations

Manhattan-Ogden Unified School District – Manhattan, KS

Manhattan High School West Campus Renovation and Addition; Manhattan High School East Campus Assessment; Bishop Stadium Renovation

Lawrence Unified School District – Lawrence, KS

District-wide Standards; Cordley Elementary School Renovation and Addition; New York Elementary School Renovation and Addition; Hillcrest Elementary School Renovation and Addition; Sunset Hill Elementary School Renovation and Addition; Langston Hughes Elementary School Renovation and Addition; Pinckney Elementary School Renovation and Addition; Woodlawn Elementary School Renovation and Addition; East Heights Elementary School Program Assessment

Blue Valley Unified School District – Johnson County, KS

Indian Valley Elementary School Renovation and Addition; Blue Valley Middle School; Pleasant Ridge Middle School



WHITNEY LANG, AIA, LEED AP BD+C
Senior Project Manager

EDUCATION

Bachelor of Architecture,
University of Kansas

REGISTRATION

Licensed Architect
LEED BD+C Accredited Professional
NCARB Certified

INVOLVEMENT

American Institute of Architects
ACE Mentor Program of Chicago
Volunteer Mentor
ACE Mentor Program of Chicago
Associate Board Member
Leadership Lawrence, 2015 Graduate
Lawrence Rotary Club
Lawrence Red Cross, Board member

CONTACT

785.330.7074
whitney.lang@gouldevans.com

Throughout Whitney's professional career she has focused on institutional and complicated projects serving in a variety of roles from programmer and project architect to project manager and construction administrator. Whitney excels in her ability to efficiently manage owner, architect, engineering, and contracting teams that lead clients through the design and construction process to solve their specific needs. Her teams deliver projects that meet the technical requirements and design vision while exceeding owners' expectations.

Whitney has remained involved in her community through various organizations such as Leadership Lawrence and the ACE Mentorship Program in which she served on the ACE Mentorship Chicago Associate Board. ACE is a national program that partners architecture/construction/engineering firms with disadvantaged students interested in joining our industry.

Lawrence Unified School District – Lawrence, KS

Lawrence High School Renovation and Addition; Hillcrest Elementary School Renovation and Addition; Pinckney Elementary School Renovation and Addition; Woodlawn Elementary School Renovation and Addition

Shawnee Mission Unified School District – Johnson County, KS

Tomahawk Elementary School, Diemer Elementary School, and Corinth Elementary School Secure Entry and Kitchen Renovations

Rockhurst High School – Kansas City, MO

Classroom Renovation and Interim Library

Auburn-Washburn Unified School District – Topeka, KS

Facility Master Plan



DAVID REID, AIA, LEED AP
Education Design Specialist

EDUCATION

Bachelor of Architecture,
Kansas State University

REGISTRATION

Licensed Architect
NCARB Certified
LEED Accredited Professional
Accredited Learning Environment Planner
Collaborative Institutional Training Initiative
Associate UDL Credential

INVOLVEMENT

American Institute of Architects
Council for Education Facility Planners
International
Panel Moderator, Innovation in Education
Symposium, Kansas City, MO, Oct. 2014

PUBLICATIONS

High Performance Buildings Get Real,
Building Operating and Management,
March 2012
Building Envelope Commissioning,
Building Operating and Management,
June 2012
Built to Succeed, Transformative Project;
Manhattan High School Case Study
for Excellence in Secondary Education,
American Schools and University,
January 2011

CONTACT

816.701.5335
david.reid@gouldevans.com

As Education Design Specialist, David will be the design team lead for the Gould Evans team. Bringing his national perspective on education trends and strategies, he will help leverage the programmatic and budget opportunities for your project. David's design work has been recognized nationally for excellence and innovation. As a practice leader in Gould Evans' national education practice, he will provide your project with a multidisciplinary process. In 2014, David co-founded STEAM Studio, an experimental learning lab in Gould Evans' office, and has since co-authored the book "Unleashing Creative Genius," highlighting research outcomes. He also serves on the UDL-IRN Advisory Committee, an international organization promoting best practices in personalized learning. This research and overall knowledge on best educational practices will help him lead visioning and programming work sessions and help establish project goals and education performance criteria to ensure your project reaches its vision.

Shawnee Mission Unified School District – Johnson County, KS

McEachen Administration Center Renovation; Comanche Elementary School (includes Library and Media Center); Westridge Middle School; Shawnee Mission West High School Additions and Renovation; Shawnee Mission Northwest High School Expansion and Renovation; Belinder Elementary School Renovation (includes Library Addition); Indian Hills Middle School; Prairie Elementary School (includes Library and Media Center)

Lawrence Unified School District – Lawrence, KS

Lawrence High School Renovation and Addition; Lawrence Free State High School Renovation and Addition; Hillcrest Elementary School Renovation and Addition; Cordley Elementary School Renovation and Addition; New York Elementary School Renovation and Addition; Langston Hughes Elementary School Modernization; Sunset Hill Elementary School Renovation and Addition; K-5 Library of the Future Prototype; Pre-Bond District-Wide Planning

Manhattan-Ogden Unified School District – Manhattan, KS

Manhattan High School West Campus Renovation and Addition; High School Prototype Classroom

Rockhurst High School – Kansas City, MO

STEAM Addition and Learning Commons; Campus Master Plan

Blue Valley Unified School District – Overland Park, KS

Blue Valley Academy High School Modernization



JAY BROWNING, RA
Senior Project Manager

EDUCATION

Bachelor of Architecture,
University of Kansas

REGISTRATION

Licensed Architect

CONTACT

816.701.5496
jay.browning@gouldevans.com

Jay's two decades of experience includes program and design development, coordination with consultants (including managing deliverables, deadlines, and review of documents), preparation of construction documents, coordination with contractor and subcontractors (including fast track of site and structural designs, constructibility, and quality control), and construction administration. Jay's ability to meet clients' needs is evident in the long relationships he has with the Shawnee Mission Unified School District, University of Central Missouri, and Graceland University. His work has entailed new construction as well as renovation and expansion of existing facilities.

Shawnee Mission Unified School District – Johnson County, KS

Indian Hills Middle School Renovation and Addition; Westridge Middle School Renovation and Addition; Northwest High School Renovation and Addition; Northwest High School Cafeteria Improvements; Comanche Elementary School Modular Classroom; Horizons High School Security Renovation; Belinder Elementary School Renovation and Addition; Belinder Elementary School Security Renovation; Roseland Elementary School Security Renovation; Highlands Elementary School Security Renovation

Manhattan-Ogden Unified School District 383 – Manhattan, KS

Manhattan High School West Campus Renovation and Addition

East Elementary School – Kansas City, MO

Renovation (Conversion of East High School)*

Faxon Center (Elementary School) – Kansas City, MO

Renovation*

Melcher Elementary School – Kansas City, MO

Renovation*

Lawrence Unified School District 497 – Lawrence, KS

East Heights Program Overlay and Assessment; Langston Hughes Elementary School Modernization

Rockhurst High School – Kansas City, MO

Learning Commons; Student Life and Alumni Center



MARIANNE MELLING, AIA
Project Architect

EDUCATION

Master of Architecture,
University of Kansas

REGISTRATION

Licensed Architect

Marianne has been a valuable addition to the Gould Evans team for over 5 years. Throughout her career, she has focused mostly on K-12 educational projects. She has worked with school districts from start to finish helping them plan, program, and design. A majority of her work has been for Lawrence USD 497. Most recently, she helped the district design for a renovation and addition of Lawrence Free State High School. In addition, Marianne has stayed involved in the community by being involved with Lawrence, KS, Pedestrian and Bike Issues Task Force and by being a member of the Association for Learning Environments.

Missouri Innovation Campus – Lee’s Summit, MO

Collaborative Campus between Lee’s Summit School District and the University of Central Missouri

Lawrence Unified School District – Lawrence, KS

Lawrence Free State High School Renovation and Addition; District-Wide Planning; Elementary School Facilities Master Plan; Secondary Schools Master Plan

Ottawa Unified School District – Ottawa, KS

District Master Planning



KELLY DREYER, AIA, LEED AP
Project Architect

EDUCATION

Bachelor of Architecture;
Bachelor of Science, Architectural Engineering,
University of Kansas

REGISTRATION

LEED Accredited Professional
Licensed Architect

Kelly’s architectural design experience at Gould Evans spans 17 years. Committed to increasing design effectiveness through a research-based approach for educational spaces, he draws from teaching research-based design as adjunct professor at The University of Kansas. Kelly has also assumed the role of leading firm-wide sustainability efforts. Kelly’s commitment to superior and responsible design has helped earn him multiple regional and national awards as well as national speaking opportunities, including his most recent talk at the 2019 Society for College and University Planning (SCUP) National Conference in Seattle on “Using Campus Development to Build Industry Partnerships and Dismantle Academic Silos.”

Lawrence Unified School District – Lawrence, KS

Lawrence Free State High School Renovation and Addition; Lawrence High School Renovation and Addition; Lawrence High School Master Plan; Pre-Bond District-Wide Planning; South Middle School and Broken Arrow Elementary School Addition; Southwest Middle School Renovation and Addition; New York Elementary School Renovation and Addition; Hillcrest Elementary School Renovation and Addition; Sunset Hill Elementary School Renovation and Addition

Manhattan-Ogden Unified School District – Manhattan, KS

Manhattan High School West Campus Renovation and Addition

Lee’s Summit R-7 School District – Lee’s Summit, MO

District Master Planning



SALLY WURTZLER, AIA, LEED AP
Project Architect

EDUCATION

Master of Architecture,
Washington University-St. Louis

Bachelor of Arts, English
Colorado College

REGISTRATION

Licensed Architect

LEED Accredited Professional

With a background in both communications and architecture, Sally brings a diverse and passionate perspective to education design. As a member of Gould Evans' national education studio, her talents are seen in both her project approach and her volunteer efforts in STEAM Studio, the National Organization for Women in Construction, and the advisory council for a local technical school. Through helping clients integrate the UDL Space Design Idea Kit into their projects, she has helped educators and administrators become more cognizant of the need to respond through design to the variable needs of every learner.

Pembroke Hill School – Kansas City, MO

Gymnasium and Dining Hall renovation and addition

San Francisco State University – San Francisco, CA

Holloway Student Residential Complex

St. Agnes Catholic School – Roeland Park, KS

Math Hub and STEAM Maker Space study

Thomas More Prep-Marian – Hays, KS

High School renovation

St. Joseph School District – St. Joseph, MO*

Carden Park Elementary School

Hamilton R-II School District – Hamilton, MO*

Hamilton Elementary School



SEAN ZAUDKE, AIA, LEED AP
Project Designer

EDUCATION

Bachelor of Architecture,
Kansas State University

REGISTRATION

Licensed Architect

LEED Accredited Professional

Sean brings more than 20 years of architectural planning and design experience. He focuses on the planning, programming, and design of educational and library facilities for clients throughout the community, state, and beyond. He brings to this project a tremendous understanding of the design requirements for creating optimal learning environments, integrating technology, and enhancing community outcomes. He is a leader in facilitating design workshops in which client groups, design teams, and community members work together to identify needs and develop solutions for meeting those needs.

Missouri Innovation Campus – Lee's Summit, KS

Collaborative Campus between Lee's Summit School District and the University of Central Missouri

Manhattan-Ogden Unified School District – Manhattan, KS

Manhattan High School West Campus Renovation and Addition

Lawrence Unified School District – Lawrence, KS

District-wide Standards; Cordley Elementary School Renovation and Addition; New York Elementary School Renovation and Addition; Hillcrest Elementary School Renovation and Addition; Sunset Hill Elementary School Renovation and Addition; Langston Hughes Elementary School Renovation; Pinckney Elementary School Modernization; Woodlawn Elementary School Modernization; South Middle School and Broken Arrow Elementary School Addition



LEXI TENGCO, AIA, LEED AP B+C
Project Architect

EDUCATION

Master of Architecture
Bachelor of Architecture
Tulane University

REGISTRATION

Licensed Architect in LA
NCARB Certified
LEED Accredited Professional B+C

Lexi is a licensed architect and LEED accredited professional that has 7 years of diverse professional and philanthropic experience in New Orleans. She received her master's degree in architecture from Tulane University in 2011 and is both an active Tulane alumnus and an ACE (Architect, Contractor, Engineer) Mentor. She is passionate about education and engaging future design leaders. A native of St. Louis, Lexi brings her creative spirit, strong people skills, and technical diligence to every project she touches. Previous work includes The Center for Innovation and Design at St. Martin's Episcopal School—a beacon for the school's groundbreaking 'Design Thinking' program—the LEED Silver-accredited Drew Elementary School historic renovation, and the LSU Dental School Simulation Lab which employs Universal Design principles throughout.

Academy of the Sacred Heart – New Orleans, LA

Mater Campus Nims Center Renovation and Entry Relocation

St. Martin Episcopal School – Metairie, LA*

New Center for Innovation and Design Technology Building;
New Field House; George Cottage Day Care Expansion

St. Mary's Dominican High School – New Orleans, LA*

School-wide Renovation and Addition including New Gayle and Tom Benson Science and Technology Complex (STREAM Program)

New Orleans Recovery School District – New Orleans, LA*

Renovation/Historic Rehabilitation and Addition



DOUG HURT, RA
Project Architect

EDUCATION

Master of Architecture,
University of Kansas

Bachelor of Fine Arts, Illustration
University of Central Missouri

REGISTRATION

Licensed Architect

In his capacity as a project architect, Doug brings over 15 years of experience on a broad range of project types, making him an asset to any project team from initial programming through final design and construction administration. Doug is committed to a collaborative approach to the design process and will work closely with clients and consultants to insure that the final deliverable exceeds expectations, while being delivered within established budgets and timelines.

University of Kansas Medical Center – Kansas City, KS

School of Dentistry

University of Kansas – Lawrence, KS

Horejsi Family Athletics Center

University of Arkansas – Fayetteville, AR

Arkansas Research and Technology Park – Lab Research Building

Blue Valley Unified School District – Overland Park, KS

Elementary School #24

South Dakota State University – Brookings, SD

Sanford Jackrabbit Athletic Complex*;
Dana J. Dykhouse Football Stadium*

Penn State University – State College, PA

Pegula Ice Arena*



PENNIE LIU, AIA
Designer

EDUCATION

Master of Architecture,
University of Kansas

Pennie's passion for architecture comes from a love of place-making and creative problem solving. For her, it is a way to translate values and visions into an interactive and dynamic environment. Pennie appreciates that the impact of architecture can be big or small, make a bold statement or provide a blank canvas, or create a new sense of place or preserve a history. Her role on the education team elevates the space where creativity, equity, and community takes place by facilitating the collaboration between the architects and the community it is serving and creating a personal and emotional connection that only makes the project stronger and more meaningful.

Lawrence Unified School District – Lawrence, KS

Lawrence High School Renovation and Addition

Manhattan-Ogden Unified School District – Manhattan, KS

Manhattan High School West Campus Renovation and Addition

Lee's Summit R-7 School District – Lee's Summit, MO

Lee's Summit High School Additions and Renovations

Southeast Community College – Beatrice, NE

Interdisciplinary Learning Center



MICHAEL RALPH, MCLFS
Researcher and Master Teacher

EDUCATION

Ph.D. of Educational Psychology,
University of Kansas In Progress (est. 2021)
Masters of Chemical and Life Sciences,
University of Maryland
Bachelor of Biology,
University of Kansas

Michael brings expertise in both education practice and research to the design process. Michael has been recognized nationally for excellent teaching in both K-12 and higher education. He is also an internationally published researcher who studies the efficacy of innovative instructional approaches. As the lead researcher in Gould Evans' national education practice, Michael will ensure your project builds upon the most cutting-edge advances in teaching and learning. He will also provide a robust evaluation process to demonstrate how the goals of your project are being met. Michael's award-winning teaching career, including the 2016 NABT Genetics Education Award and 2020 USEA Outstanding Master Teacher Award, shows that he can make educational best practices a top priority. His record of peer-reviewed, published research and scholarship will provide confident design evaluation throughout the project.

San Francisco Unified School District – San Francisco, CA

Research for Mission Bay School and Professional Learning Center

Milpitas Unified School District – San Francisco, CA

Learning Centers Post Occupancy Evaluation Phase II

Covid-19 Impacts on Middle School Education – Kansas City, MO

Phase I Research Project

Gender Biases in STEM Education – Kansas City, MO

Research Project

University of Kansas and NorvaNivel – Lawrence, KS

Active Learning Classrooms Research Collaboration



MICHELLE BARRETT
Designer

EDUCATION

Master of Architecture,
Tulane University

Bachelor of Science, Architecture,
Kent State University

As a recent addition to the Gould Evans team, Michelle brings a dynamic skill set and design perspective informed by time spent in Italy studying abroad, as well as time practicing in the diverse contexts of Seattle, Cleveland, Baltimore, and New Orleans. A member of the National Organization of Minority Architects, Michelle advocates for diversity, inclusion, and equity within the architectural profession and the built environment. In her role as designer, she contributes to the entire project process from initial programming and schematic design all the way through construction documentation.

Whole Life Academy – Orlando, FL
Hospital Church

Junior Achievement of Greater Kansas City – Kansas City, MO
Office Tenant Improvement Project

Aventis Health – Orlando, FL
Health Village Academy



JAYNE DREYER, LEED AP
Project Architect

EDUCATION

Bachelor of Architecture,
University of Kansas

Jayne has been with Gould Evans since graduating from the University of Kansas. In her time with the firm, she has worked on a number of community and corporate office projects ranging from master planning and the construction of new facilities to renovations, improvements, and signage/wayfinding graphics. Jayne's enthusiasm and talent as a Project Designer is a benefit to each project she touches. Her projects have been the recipient of several recent awards.

St. Teresa's Academy – Kansas City, MO
Windmoor Center Chapel and Classroom Building

Orleans Parish School Board – New Orleans, LA
Edna Karr High School Design

Lee's Summit R-7 School District – Lee's Summit, MO
Bond Package

Rockhurst University – Kansas City, MO
Pedro Arrupe, S.J., Hall

University of Central Missouri – Warrensburg, MO
Morrow Garrison Student Recreation and Wellness Center Renovation;
Campus Master Plan

University of Kansas – Lawrence, KS
Allen Fieldhouse Renovation; Athletics Hall Exhibit



DENISE BLISS
Interior Designer

EDUCATION

Bachelor of Interior Design,
University of Arkansas

Denise brings over six years of experience in interior design and furniture, fixtures, and equipment expertise. In her time at Gould Evans, she has worked on numerous substantial projects, including managing the furniture design, bidding, procurement, and installation for USD 497's two high schools. Her obsession with organization and efficiency allow her to identify solutions to maximize space and function. Denise is a dedicated, team-based designer whose experience with interior renovations elevates the quality of interior architectural design for all of her projects.

Lawrence Unified School District – Lawrence, KS

Lawrence High School Addition and Renovation; Lawrence Free State High School Renovation and Addition; Media Center Furniture

Westside Community Schools – Omaha, NE

Westside Middle School Renovation and Addition

St. Teresa's Academy – Kansas City, MO

Learning Commons Addition



KATIE POHLMAN,
NCIDQ, IIDA, LEED AP
Interior Designer

EDUCATION

Master of Science, Historic Preservation
Oxford University/Oxford Brookes
University

Bachelor of Science, Interior Design
Kansas State University

REGISTRATION

NCIDQ Certified

Katie's international education informs a dynamic approach to interior design. Coupled with her 5+ years of experience, this unique perspective allows her to thoughtfully execute interior spaces for a diverse range of project types—spaces that diligently adhere to code and life safety requirements while simultaneously supporting the everyday needs of their users. Katie's experience in the realm of custom furniture also provides an in-depth understanding of furniture specification and fabrication, making her a valuable member of the design team from programming all the way through final design and construction administration.

St. Paul's Episcopal Day School – Kansas City, MO

Classroom Renovation

Cure of Ars Catholic School – Leawood, KS

Classroom Renovation and Addition

University of Kansas – Lawrence, KS

Earth, Energy, and Environment Center



MATT NUGENT, AIA, LEED AP
Project Architect

EDUCATION

Master of Architecture,
Boston Architectural College

Bachelor of Arts, History,
St. Louis University

REGISTRATION

Licensed Architect

With 16 years of experience in the design and construction of a wide range of environments, Matt provides leadership and true passion for his projects and clients. He has been responsible for all aspects of a project including planning, programming, design, construction documents, and administration along with schedule/budget management. As an experienced project architect and manager, he understands client expectations and their need to align with an institution's vision and goals. Matt has worked on many project types, including educational, civic, residential, and not-for-profit facilities. This wide-ranging proficiency allows him to bring his knowledge from the varying project types to each and every project.

St. Paul's Episcopal School – Kansas City, MO

Master Plan, Major Renovation

KIPP Academy – Kansas City, MO

Academy Renovation

Rockhurst High School – Kansas City, MO

Learning Commons Renovation

St. Teresa's Academy – Kansas City, MO

Goppert Hall Gymnasium and Learning Commons Expansion and Renovation



TAB 5: REFERENCES

Missouri Innovation Campus – Lee's Summit, MO

This page is intentionally left blank.

REFERENCES

**Kyle Gorrell, Facilities Director****LEE'S SUMMIT R-7 SCHOOL DISTRICT**

600 SE Miller St.

Lee's Summit, MO 64063

PROJECT: District Master Plan

816.986.1000; kyle.gorrell@lsr7.net

Trisha Brooke-Freundt, Construction Manager**MANHATTAN-OGDEN USD 383**

2031 Casement

Manhattan, KS 66502

PROJECT: Manhattan-Ogden Bond Issue Projects
785.587.2188; patriciab@usd383.org**Tony Barron, Director of Facilities****LAWRENCE USD 497**

110 McDonald Drive

Lawrence, KS 66044

PROJECT: Master Plan & District-Wide Facility
Assessment

785.832.5975; tbarron@usd497.org

Jacob Slobodnik, Director of Facilities**BLUE VALLEY USD 229**

15020 Metcalf Avenue

Overland Park, KS 66223

PROJECT: Blue Valley Elementary School 24

913.239.4000; jslobodnik@bluevalleyk12.org

Jeremy Bonnesen, Director/Principal**MISSOURI INNOVATION CAMPUS**

1101 NW Innovation Parkway

Lee's Summit, MO 64089

PROJECT: Missouri Innovation Campus

816.986.3414; jeremy.bonnesen@lsr7.net

This page is intentionally left blank.



Russell Middle School – Milpitas, CA

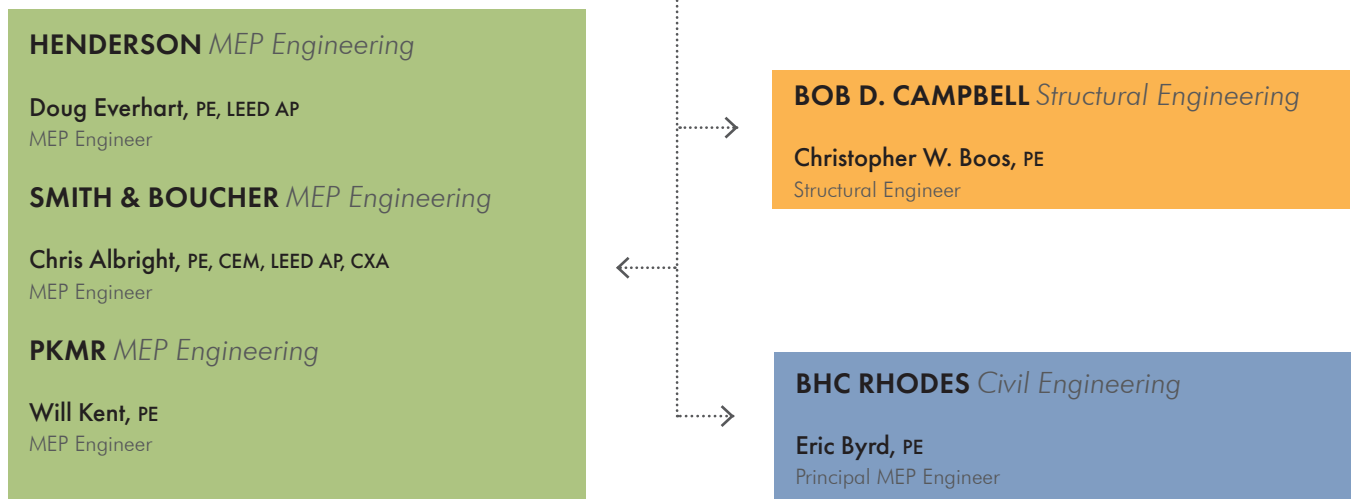
TAB 6: SUB-CONSULTANTS

This page is intentionally left blank.

SUB-CONSULTANTS



ENGINEERING PARTNERS*



*Gould Evans has strong working relationships on education projects with a number of consulting engineers, and we look forward to co-selecting the best experienced and most aligned team for the various respective projects.

MEP ENGINEERING PARTNER



Henderson Engineers is a national building systems design firm. The systems they design help bring buildings to life by providing air and water flow, lightning, power, and technology integration.

Henderson knows their work is about more than buildings. It's about the people, experiences, and potential inside. At the core of every project, you'll find them working with integrity, intelligence, and care. They are as passionate about people as they are about their work, and that unique focus ensures they can meet their clients' needs. Even better, it helps them enhance the experience for the people who use the spaces they help create.

Henderson is committed to the life of each building. Their view is the no project is ever truly finished because the building lives on. That means they stay an engaged partner even after the books are closed. When you work with Henderson, your project becomes their project: there is always a solution, and they will work tirelessly to find it. Their technical accuracy, attention to detail, and knowledge of where the industry is headed helps drive them to make every project the very best it can be.

Because good design on paper requires great building partners to bring it to life, you'll find construction management and commissioning services for Henderson Building Solutions under the same roof. Together, Henderson is changing the engineering and construction industries and redefining how buildings come to life.



DOUG EVERHART, PE, LEED AP
MEP Engineer

EDUCATION

Bachelor of Architectural Engineering,
University of Kansas

REGISTRATION

Professional Engineer

Doug is Henderson's K-12 Education Practice Director and is well-known for his proactivity and responsiveness. He has the knowledge and expertise that's required for any K-12 facility. What really makes him stand out is his awareness and understanding of the needs of both students and staff and how that knowledge guides his design teams with the end users in mind. Whether it's a renovation, addition, or new construction, his calm and steady leadership throughout the design process and his ability to bring an experienced perspective to develop successful design solutions always serves his clients well.

Lawrence Unified School District – Lawrence, KS

Lawrence High School Renovation and Addition

Olathe Unified School District – Olathe, KS

Olathe West High School

Blue Valley Unified School District – Overland Park, KS

Valley Park Elementary School Addition; Hilltop Learning Center

Lee's Summit R-7 – Lee's Summit, MO

Missouri Innovation Campus; Lee's Summit High School Athletic Complex Upgrades

MEP ENGINEERING PARTNER



Smith & Boucher is a full service MEP firm that provides engineering design for all project types and clients, located in the Kansas City area. Their projects have covered nearly all 50 states as well as multiple projects in Central and South America. Design expertise includes HVAC, plumbing, electrical power, electrical lighting, building management systems, fire alarm systems, fire protection systems, as well as the low voltage IT/Data, audio visual, CCTV, and building security systems. Market segments include everything from multi-family, mixed-use, dormitory, retail, commercial office, K-12, higher education, government, and healthcare.

At Smith & Boucher, they have three core offerings:

- MEPF Design and Consulting Engineers
- Building System Commissioning
- Energy Auditing & Turnkey Energy Project Implementation



CHRIS ALBRIGHT, PE, CEM, LEED AP, CXA
MEP Project Manager, President

EDUCATION

Bachelor of Architectural Engineering,
Kansas State University

REGISTRATION

Professional Engineer

Smith & Boucher staff involvement in all three core markets results in highly effective and efficient engineers that understand the design, construction, and operation of major commercial facilities. They pride themselves on pragmatic solutions to meet modern building and energy code requirements. Smith & Boucher project engineers utilize energy modeling early in the design process to accurately predict energy usage and evaluate system options. They are able to maximize system performance by ensuring that fully informed decisions can be made on building design elements.

An officer of the firm, Chris Albright is a complex problem solver and forward thinker. Chris is highly experienced in MEP design, facility assessments, energy audits, master planning, and commissioning services. Chris has extensive knowledge beyond MEP systems and extends into envelope and general construction activities. His knowledge and foresight is utilized to solve issues before they become problems.

Liberty School District – Liberty, MO

Liberty High School; Liberty North High School; LHS Gym Addition; LHS Performing Arts Addition; LHS Stadium; Franklin Elementary School; Manor Hill Elementary School; Kellybrook Elementary School; Warren Hills Elementary School; Lewis & Clark Elementary School; Shoal Creek Elementary School; Ridgeview Elementary School; Epic Elementary School; Lillian Schumacher Elementary School; Discovery Middle School; Heritage Middle Schools; Liberty Middle School; Early Childhood Center; District Office

Park Hill School District – Kansas City, MO

New LEAD Innovation Center; New Hopewell Elementary School; New Middle School #4; Congress Middle School Remodel; Plaza Middle School Remodel; South High School Office and Media Center Remodels; Transportation/Support Services Buildings

North Kansas City School District – North Kansas City, MO

New Rising Hill Elementary; New Northview Elementary

MEP ENGINEERING PARTNER



PKMR is an established MEP Engineering and Commissioning firm with a strong reputation of providing professional services to clients in the construction industry throughout the United States. It is their vision to develop long-term client relationships and be leaders in the engineering community.

PKMR was established in 2002 and has grown into an industry leading engineering firm. Staff members are made up of principals, project managers, engineers, energy modelers, commissioning agents, designers, CAD technicians, and administrative personnel. They have developed many client's relationships over the years, and the client base consists of architects, owners, developers, facility managers, institutions, governments and colleges. The vast majority of clients at PKMR are repeat clients which is attributed to the team they assemble.

They offer a full range of mechanical, electrical, plumbing and life safety for both new construction and renovation projects. They have a penchant for implementing energy efficiency when it is warranted. Their projects range from basic MEP designs to complex systems requiring Energy Modeling and CFD Modeling.



WILL KENT, PE
MEP Engineer

EDUCATION

Bachelor of Architectural Engineering,
Kansas State University

REGISTRATION

Professional Engineer

With 27 years of experience in project management and design for new and renovated facilities, Will is well suited to many types of projects. Many of his projects have been renovation projects which require a high amount of coordination and engineering to be maintained within budget. He has extensive experience in the educational market. Additionally, his experience includes: churches, restaurants, office buildings, retail stores, recreational facilities, post offices, banks, and assisted living and nursing. He has also worked with the Corps of Engineers, National Guard, and US Army. Will was a past President of the Topeka Section of ASHRAE.

DeSoto USD – DeSoto, KS

DeSoto High School Addition and Renovations; DeSoto Schools Athletic Fields and Sports Complex

Shawnee Mission USD 512 – Overland Park, KS

Additions and Renovations at all High Schools, all Middle Schools, and most Elementary Schools

Gardner Edgerton USD 231 – Gardner, KS

Advanced Technical Center

STRUCTURAL ENGINEERING PARTNER



Bob D. Campbell & Co. is an independent structural engineering firm well known by the architectural community for its creative solutions to design challenges, while remaining practical in design and responsive to construction difficulties. They have served the Kansas City architectural community for 60 years on a variety of projects including Cerner, Teva Headquarters, the Kansas Statehouse Preservation and Restoration, the Liberty Memorial Restoration, Shawnee Mission Medical Center, Children's Mercy Hospital, and numerous office, retail, educational, and health care facilities.

In 2013, the Greater Kansas City Chapter of the American Subcontractors Association recognized the firm as the Engineering Firm of the Year. Ingram's Best of Business Kansas City awarded bronze to the firm for the Best Engineering Firm.

Bob D. Campbell & Co. is in its third generation of ownership. Their exemplary service is due in part to the fact that all principals serve as structural project managers and are actively involved in all phases of each project. While the principals' average tenure with the company is 22 years, several recent associates and staff engineering graduates serve to keep the firm energetic and strong.

Bob D. Campbell & Co. has provided structural engineering on a variety of civic and community centers, educational facilities, health care facilities, warehouse and manufacturing facilities, sports facilities, etc. throughout the United States and even abroad. Projects have encompassed renovation, adaptive reuse and expansion of existing facilities. Many of these facilities are LEED certified.



CHRIS BOOS, PE
Structural Engineer

EDUCATION

Bachelor of Architectural Engineering,
University of Kansas

REGISTRATION

Professional Engineer

Chris became a Principal at Bob D. Campbell and Company in 2009 and has more than 23 years of structural engineering experience. Chris is experienced in structural design, drawing development, and construction administration. He has worked on numerous projects and a variety of structural systems.

Shawnee Mission Unified School District – Overland Park, KS

Center for Academic Achievement; Aquatic Center & Garage; Lenexa Hills New Elementary School; Crestview New Elementary School; Rhein Benninghoven New Elementary School; Highlands New Elementary School; Tomahawk Elementary Addition/Renovation; Misc. Renovations at 7 Schools; Brookridge Elementary School Addition; Trailridge Middle School Additions; Westridge Middle School Additions; Indian Hills Middle School Additions; Shawnee Mission West High School Additions; Shawnee Mission South High School Additions; Shawnee Mission North High School Additions; Shawnee Mission Northwest High School Additions; Shawnee Mission South Stadium Renovation & Additions; Shawnee Mission South Flex Theater Addition

CIVIL ENGINEERING PARTNER



Brungardt Honomichl & Company, P.A., (BHC RHODES) was founded in 1992 by three young entrepreneurs with a mission to provide telecommunication customers with value-added engineering design services, all while giving back to their community and supporting higher education.

In 2001 the corporation began going through rapid change navigating the telecom bust. Over the next six years with careful strategic planning, BHC RHODES steered a course into new engineering territory adding public works expertise followed by development, traffic, stormwater and construction management services. During that time of growth and transition, the company merged with Rhodes Surveyors, Inc, a land surveying company based in Kansas, forming BHC RHODES.

Continuing upward growth momentum following the merger, BHC RHODES added LEED accredited expertise and a specialized 3D laser scanning surveying service, one of the first in the Kansas City area. By 2009 BHC RHODES expanded both Kansas office locations, opened a new office in Dodge City, Kansas and acquired the assets of two local engineering and surveying firms. The acquisitions expanded their land records library covering counties in Kansas and Missouri, placing BHC RHODES in top position of the largest land records owned in the Kansas City metropolitan area.

BHC RHODES has landed on numerous fastest growing company lists and has won best place to work honors. Most recently, BHC RHODES earned the title of Top Area Engineering Firms and Largest Engineering Firms in KC by Kansas City Business Journal and Best Firms to Work For by Zweig Group. Future plans include continuing their focus on giving back to the community and support of higher education with the Brungardt Honomichl & Company, P.A., engineering scholarship program at Kansas State University.



ERIC BYRD, PE
Civil Engineer

EDUCATION

Bachelor of Civil Engineering,
Kansas State University

Eric's 12 years of experience includes site planning and design, storm and BMP design, sanitary sewer design, commercial and residential development.

Shawnee Mission Unified School District – Overland Park, KS

Center for Academic Achievement; Lenexa Hills Elementary School; Crestview Elementary; Brookridge Elementary; Rhein Behhingenhoven Elementary; Shawnee Elementary School; Trailridge Middle School; Shawnee Mission South Theater Addition

Blue Springs School District – Blue Springs, MO

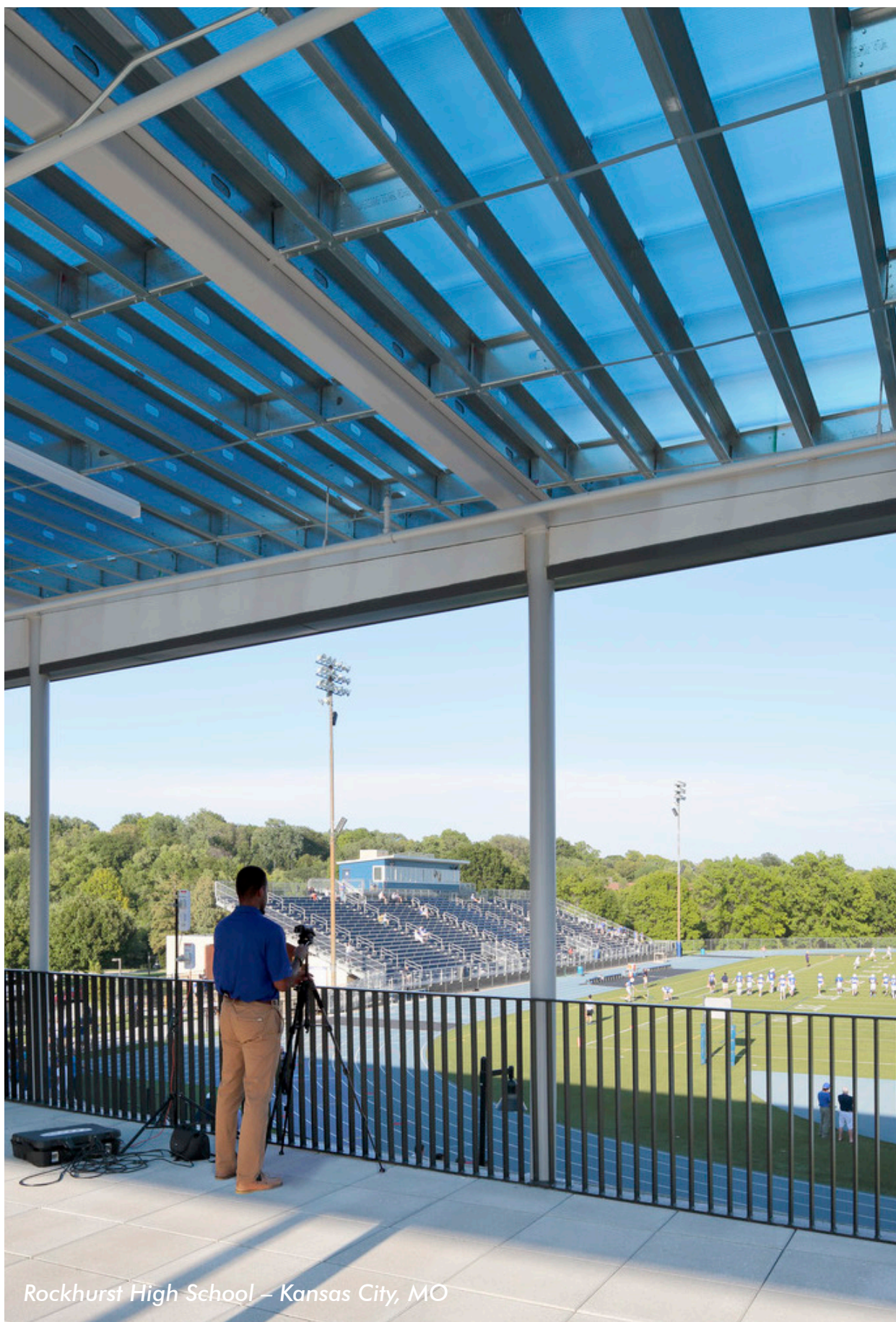
Blue Springs High; Chapel Lakes Elementary; John Nowlin Elementary; Liggett Trail Education Center; Lucy Franklin Elementary; Moreland Ridge Middle; Thomas Ultican Elementary

Kansas City Kansas Public Schools – Kansas City, KS

Douglass Elementary; Fairfax Elementary; Frances Willard Elementary; Silver City Elementary; Sumner Academy of Arts and Science

Blue Valley Unified School District – Overland Park, KS

Leawood Middle School



TAB 7: FEE STRUCTURE

Rockhurst High School – Kansas City, MO

This page is intentionally left blank.



TAB 8: ADDITIONAL ITEMS TO ANSWER

Hillcrest Elementary School – Lawrence, KS

This page is intentionally left blank.

CONSTRUCTION OVERSIGHT

MINIMIZE CONSTRUCTION CHANGE ORDERS; SPECIFICALLY RELATED TO UNFORESEEN CONDITIONS, DESIGN OMISSIONS, AND CODE OR JURISDICTIONAL AUTHORITY REVIEW

Gould Evans' stated goal is to minimize the need for change orders on all of our projects. We believe the best time to control the need for a modification is at the beginning of the project as you are working through the design process.

By effectively communicating with the user group and the District, developing accurate and coordinated documents, and managing the construction process, we have been successful in minimizing design omissions. For remodeling and renovation projects, Gould Evans has had a great deal of success using a "Plans-in-Hands" quality control technique. This involves walking the project at the Design Development phase and Contract Documents phase with the plans to identify any changes or conflicts before the plans go to the contractor. Taking the additional time to seek out any undocumented site conditions is critical in reducing change orders related to unforeseen conditions.

Getting in front of the code officials early in the process and making sure they understand the scope of the project is important. By walking them through the project and explaining the code strategy for adding onto an existing building reduces the tendency to second guess issues that arise in the field and that could normally cause change orders.

When change orders are requested, Gould Evans' top priority is protecting the District's interests. We expedite the process with rigorous controls:

- Issue clear revision documents that allow time for detailed pricing from contractor
- Review changes and ramifications with the owner
- Review changes and ramifications with the construction team
- Solicit detailed cost information, with quality breakdowns
- Closely analyze cost change proposals against industry standards and benchmark data (including review with owner)
- Request cost adjustments accordingly
- Issue change order following owner's final approval

QUALITY CONTROL

Coordinating the work must be paired with Quality Assurance & Quality Control (QA/QC) best practices. Our firm practices a robust process of QA/QC internally that match a senior project architect outside of our team with the project at milestones for specific and focused reviews on relevant items.

CONSTRUCTION CONTROL

Our project and construction administration services are tailored to ensure that educational facilities are constructed to align with the team vision as well as the project schedule and budget. This requires a close and open relationship with Shawnee Mission USD 512 stakeholders, construction managers, and contractors, and the use of the most effective technology for file sharing and communication. We utilize Bluebeam for collaborative shared "sessions" during Construction Administration. Critical elements of our construction phase process include:

- Attendance at all pre-construction meetings involving owner, construction team, and design team members.
- Carefully reviewing details of the building with the consultants to ensure design intent is executed.
- Reviewing construction method for elements involving overlapping construction trades and directly assisting to coordinate these multiple trades.
- Referring back to the (BIM) model to assist with avoiding critical resolution conflicts.
- Regularly scheduled and thorough visits to the site, including extensive photo documentation of progress; additional site visits are often necessary to meet schedule, which we always accommodate.
- Individual meetings with construction management, subcontractors, trades and design disciplines to resolve any questions or issues.
- Meetings with the owners and their representatives to review proposed changes or substitutions. Preferably, the design team is able to address and mitigate potential changes, such that more formal change orders are minimized or negated entirely.
- Periodic reviews of the contractor's schedule.
- Focus attention to ensure the design intent is being executed.



COMMISSIONING

Our engineers provide commissioning services aimed at ensuring building systems perform according to owner's needs, the design intent, and the contract documents. Our engineers know the district standards and practices and are knowledgeable about many of their facilities, thus reducing the need for this commissioning, however, our Engineers can provide those additional services should SMSD wish to engage that service as a part of the contract. Benefits of commissioning include reduced energy use, lower operating costs, reduced contractor callbacks, better building documentation, improved occupant productivity, and verification that the systems perform in accordance with the owner's project requirements. One of the biggest rewards we've found from commissioning is a higher quality end product that works better, lasts longer, and is more efficient than a non-commissioned building.

Our engineers have experience in guiding projects through this process, with involvement in all aspects of the project, design, construction, and post construction. We review documents, perform site visits, write testing procedures, witness system startup, and generate the final Commissioning Report.

METHODS TO CONTROL, MONITOR, AND ESTIMATE CONSTRUCTION COSTS

Gould Evans is skilled at cost-benefit analyses to assist SMSD with decisions that support your academic vision and student success. Realistic budgeting in the early phases of a project, then aggressive cost control during the detailed design and documentation process, are a normal part of our practice. Budget review and conformance will be performed at each project phase with both our team cost estimator and SMSD.

Having nearly 40 years of experience working with institutional clients, we appreciate the importance of cost estimating, working within budgets, and being strategic about how facility dollars are invested.

During the conceptual planning and design phase, we anticipate working with the cost estimating team to evaluate from a cost standpoint the variety of options that we will bring to the table for your consideration and to meet the project budget. At this conceptual level, considerations will include:

- Basic square feet of new construction compared to renovation, if applicable
- Quantifying exterior building envelope on each option, if applicable
- Amount and complexity of sitework involved
- Relative cost premium of any inherent complexity of each alternative
- Square foot budgeting based on preliminary building system selections
- Square foot budgeting based on the volumes and finishes associated with the program areas being considered

In addition, Gould Evans is able to work closely with the team cost estimator to arrive on commonly shared approaches to developing the BIM model that can enable them to perform minimal edits in order to extract the format of data required for their estimating. The estimates can then be accompanied by annotated plans printed from the Revit model that all stakeholders may review to ensure accurate interpretation of finishes, systems, and area takeoffs.

In the construction document phases, we will continue to work actively with our cost estimator to develop line item construction cost estimates and value analysis, which will be an integral part of the design and documentation process.

CONSTRUCTION PHASING

Renovation and addition projects inherently bring the issues surrounding phased construction to the design process. The Gould Evans team understands that is not possible for most schools to close their doors while necessary renovations are being made. The firm has developed procedures to ensure the safety and security of the occupants and minimize disruptions, while modifications are being made in the most efficient manner possible. Wherever possible, new construction should occur first to provide class / student / faculty flexibility in staging classroom moves for renovation of existing buildings. The most intensive and disruptive construction should be carefully choreographed for summer construction, after hours, or other off-peak time for student safety and to minimize the impact on building users.

CONSTRUCTION ADMINISTRATION

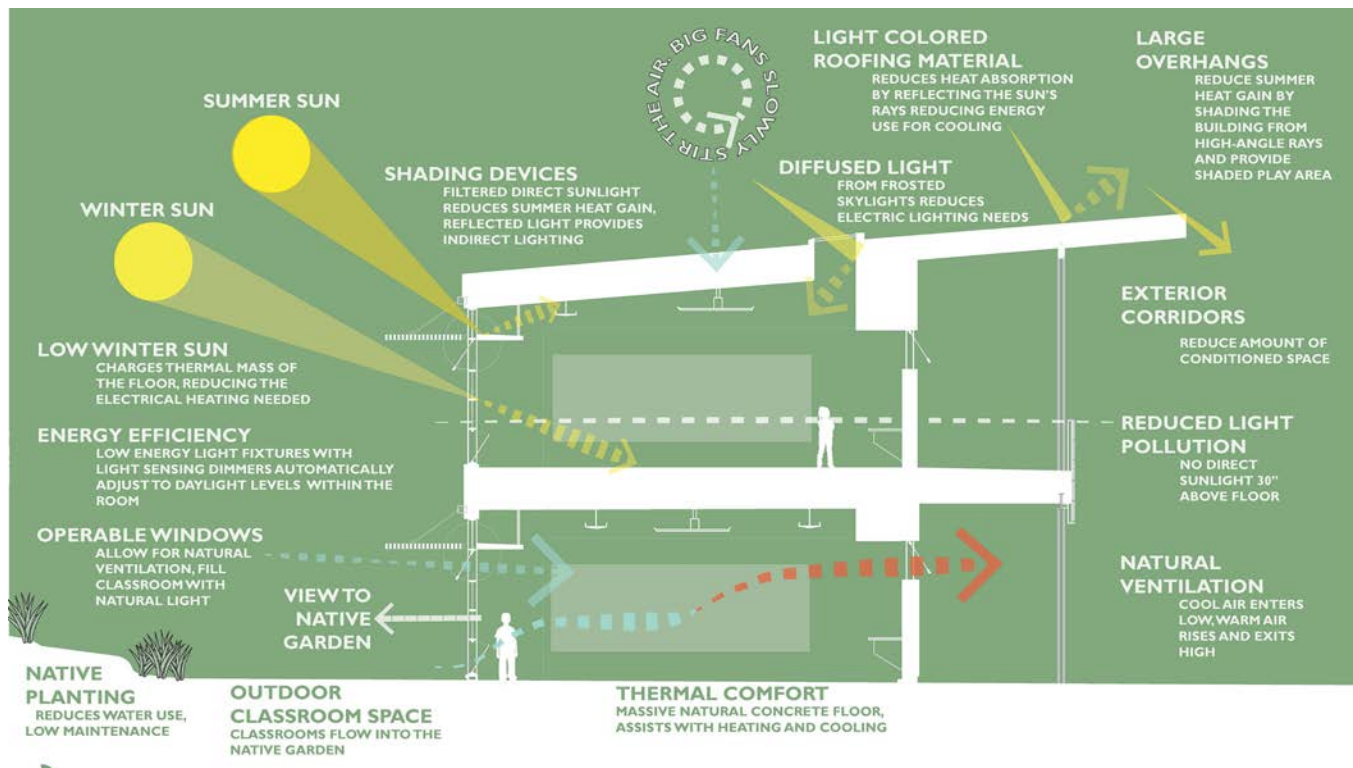
Quality Construction Administration is a product of a combination of characteristics, including a detailed knowledge of the design intent and the construction documents which articulate that intent, technical expertise, outstanding communication, information management, focus on problem-solving and a willingness to participate positively with other team members.

Our approach to this project will be to first assign team members with these characteristics, and work with you to develop a work plan for delivering it through construction. In short, we believe Construction Administration is the process of actively measuring construction performance toward the expectations outlined in the documents and also measuring the quality of the documents toward constructability. The very nature of this work requires a collaborative problem-solving approach and attitude. Because there will be so many people involved with these projects, and this group of people will be responsible for moving the construction process forward, quality communication will be essential to a successful outcome.

One of our primary roles will be to support your team by providing information on a timely basis to all associated parties, so quality decisions can be made. We propose to utilize a variety of communication methods to accomplish this, including: Face-to-face meetings; Telephone conversations; Digital communications (digital imaging, Skype meetings, e-mail, etc.); and Written, hard copy information (drawings, forms, meeting minutes, etc.).



SUSTAINABILITY



SUSTAINABLE BUILDING DESIGN

Sustainable design is fundamental in our practice, our project work, and our internal culture. How to do more with less is always a strategic focal point throughout our design process. Our goal is always to find sustainable and efficient ways to create optimal environments within buildings that meet the needs for building efficiency. We have completed over 30 buildings that are **LEED certified** or pursuing certification, including a number of which are Gold and Platinum status.

Inspired by our AIA 2030 Commitment, we analyze the energy use intensity (EUI) for each of our buildings in detail, examining baselines, reviewing targets, and comparing predicted and actual energy consumption. Building on support from our sustainability consultants, our efforts focus on optimizing energy use without compromising design, safety, or performance. We gather and compare data on energy efficiency measures and successes in each of our completed projects to apply to future project processes.

Our dedication to sustainable design practices is cultural to our organization, evidenced by the fact that Gould Evans is a cosignatory of the **Architecture 2030 Challenge** (which seeks to make all new construction carbon neutral by the year 2030) and that many of our associates are LEED Accredited Professionals, honoring our commitment to drastically reduce the energy consumption of our clients' projects.



RENEWABLE ENERGY

In addition to our commitment to sustainable building design, we understand that using renewable energy sources is a critical component of being stewards of our environment, and we have included solar voltaics and passive heating/cooling strategies on many recent projects, including the NOAA Southwest Fisheries Science Center, the San Francisco State University Holloway Student Housing development, and the Arizona Western College Community Center.

Also, we have created benchmarks that we are committing to for every project we are involved in, no matter the sustainability goals of the client. These benchmarks include avoiding all red list materials (i.e. materials that are deemed harmful to living creatures, including humans) and creating a path to net zero energy usage. Creating a path to net zero means developing buildings that are intentionally designed with a future where renewable energy sources are ubiquitous in mind. We understand that not all clients are prepared to use renewable energy sources for their buildings. However, we believe it is our responsibility as architects and designers to provide the leadership and foresight to ensure that when renewable energy sources are commonplace, our buildings are ready.

PROJECTS CERTIFIED LEED SILVER OR HIGHER

- 750 Second Street Residences **LEED Gold**
- Arizona State University Biodesign Institute **LEED Platinum**
- Arizona State University Global Institute of Sustainability **LEED Silver**
- Arizona State University Hassayampa Academic Village **LEED Silver**
- Arizona State University Weatherup Center **LEED Gold**
- Berkeley Public Library Claremont Branch **LEED Silver**
- Central New Mexico Community College Westside Building **LEED Silver**
- Chabot-Las Positas Community College Child Development Center **LEED Silver**
- East San Jose Carnegie Branch Library **LEED Silver**
- Florida State University William Johnston Building **LEED Gold**
- Laney College Fieldhouse **LEED Gold**
- Lawrence Public Library **LEED Gold**
- Maricopa County, AZ Downtown Court Tower **LEED Gold**
- NOAA La Jolla Southwest Fisheries Science Center **LEED Gold**
- NOAA University of Alabama National Weather Center **LEED Gold**
- Penn Valley Community College Health Science Institute **LEED Silver**
- Salt River Pima-Maricopa Indian Community Justice Center **LEED Silver**
- State Historical Society of Missouri Center for Missouri Studies **LEED Gold**
- Tulane University Hertz Center **LEED Gold**
- Tulane University Yulman Stadium **LEED Silver**
- University of Central Missouri Morrow-Garrison Student Rec Center **LEED Gold**
- University of Missouri-Kansas City Student Union **LEED Gold**

WHY OUR FIRM

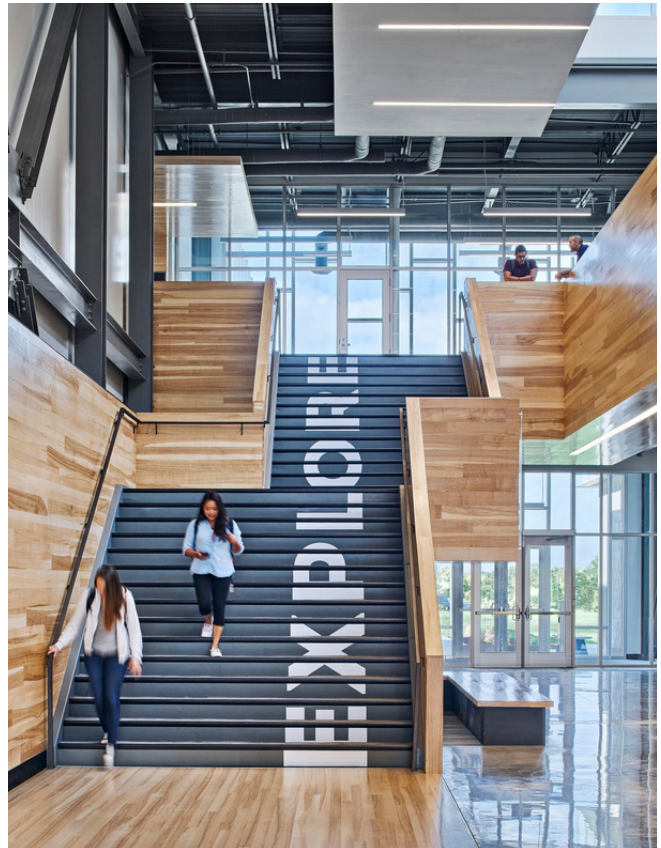
In today's evolving world of education, you need a partner who is local, has an array of national experience, and who can assess the current and future educational needs of Shawnee Mission Unified School District 512. The team at Gould Evans has the experience and qualifications for your future projects.

We are local: We are locally connected and are invested in the SMSD schools and community at large. We bring a national perspective of education design best practices.

We are building experts: We are experienced in managing complex renovations for school districts while managing budgets. Our designs are both enduring and sustainable.

We are education researchers: Our team of education designers approach every school project thinking about how we can make the learning spaces equitable for all learners and adaptable to the future of 21st century learning.

Not only do we have a proven track record of excellence in educational building design, but we also value being a great partner who will be at your side each step of the way. Let us help you continue to be a model for education in our community.



This page is intentionally left blank.

**What questions are driving
YOUR next steps of innovation?**

gouldevans

4200 Pennsylvania Avenue
Kansas City, MO 64111

phone 816.931.6655
fax 816.931.9640

gouldevans.com